

FKS

HANDLES FOR WINDOWS AND DOORS

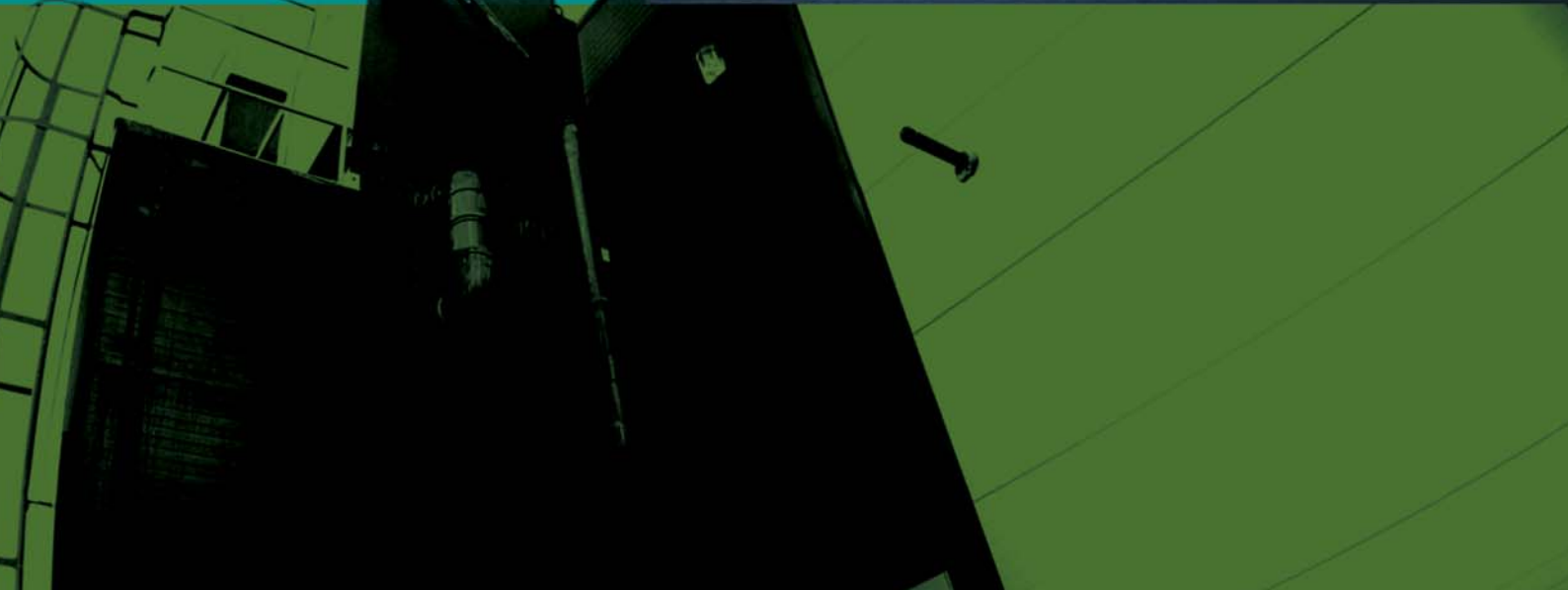
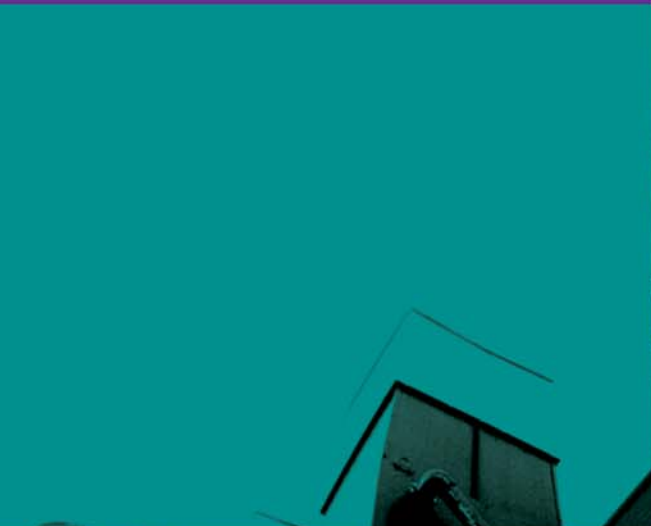


C A T A L O G U E
2 0 1 2 / 2 0 1 3

A B O U T U S



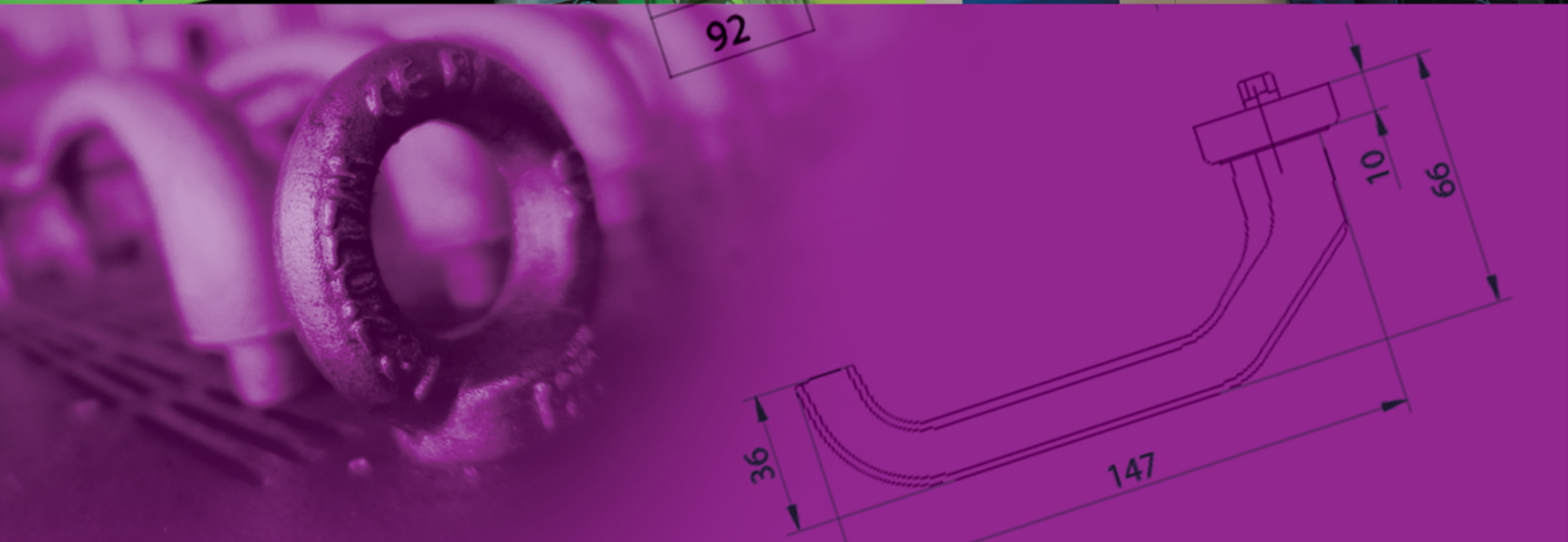
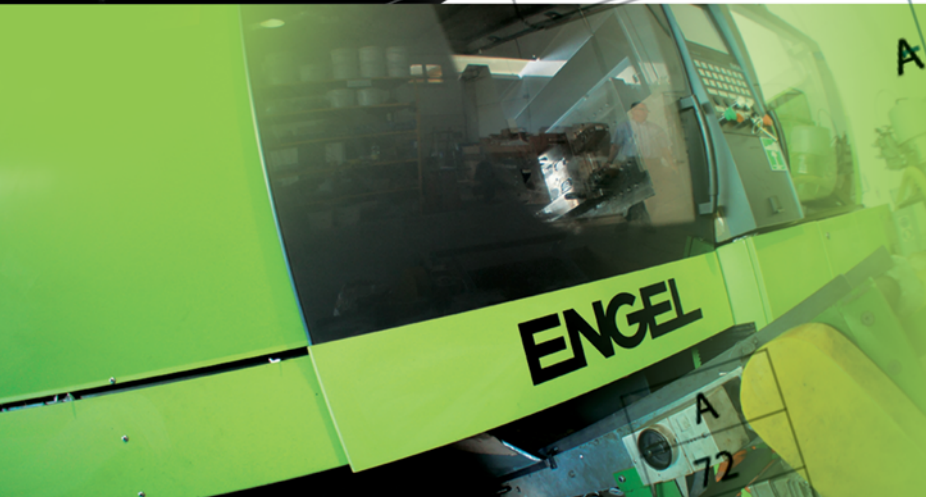
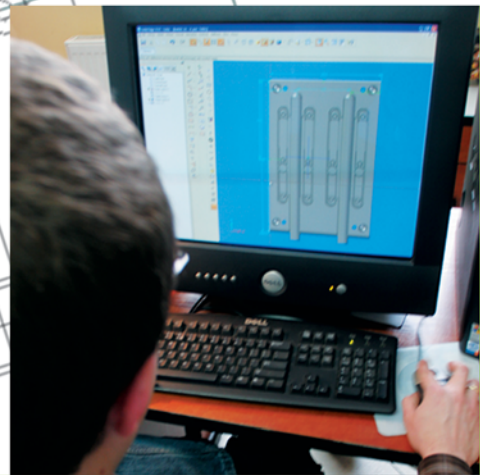
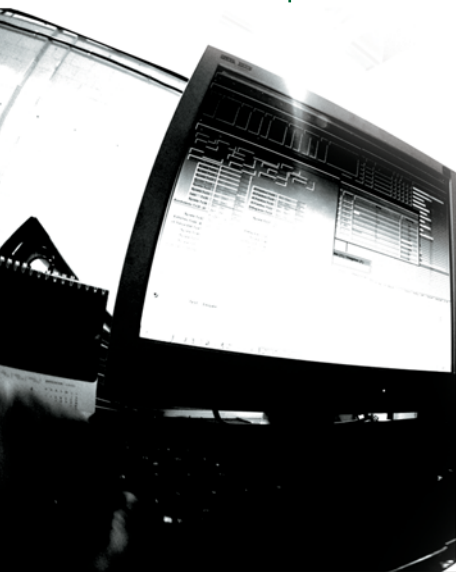
Established in 1998, the company FKS Okucia Okienne i Drzwiowe Sp. z o.o. has specialized in manufacturing of aluminium handles for windows and doors. After several years of activity, it has become one of the most significant manufacturer of fittings in Europe.

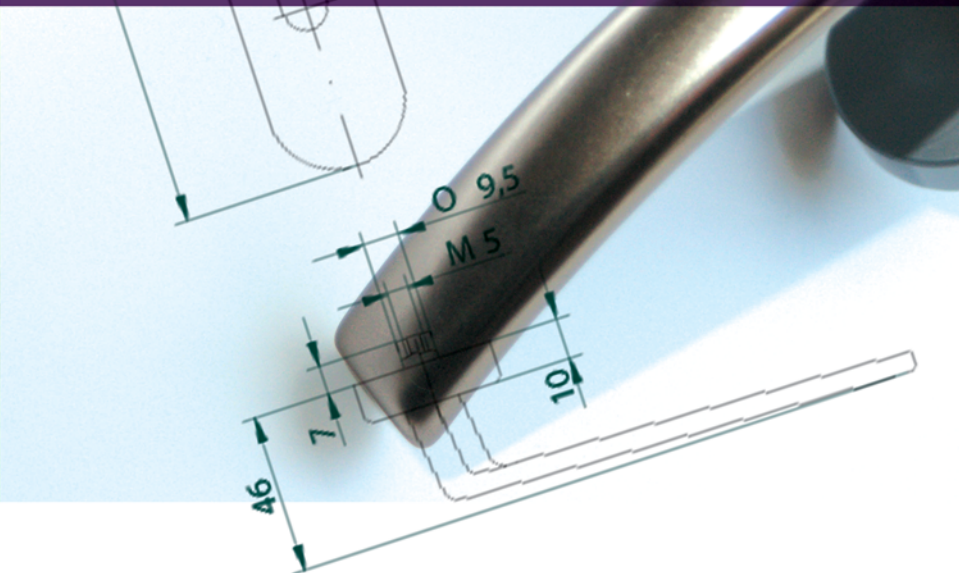


C R E A T I V E P O T E N T I A L

The company has its own constructional office and a modern tool-room. With the help of engineering programs – linked by computer to CNC machines – new and original products are created, what extend own assortment as well as specific products for every customer.

Therefore offered products program completely meets the needs of manufacturers of PVC joinery, wood and aluminium.





PHILOSOPHY OF OUR COMPANY

The aim of the company is to meet the customer demands. It is carried out by continuous market researches, highest quality of products, complete program, individual care of every customer, technical support in non typical solutions, short delivery terms and absolute honesty in business.

M A N U F A C T U R I N G

Having all necessary production technologies, the company manufactures its products in comprehensive manner, controlling the quality at every stage of their development. With more than 130 employees and managing a 7000 m² production area the company is able to produce several million of fittings every year.





Export accounts for 70 % of production and sales range covers the whole of Europe. Customers of FKS are the largest global companies in Europe, manufacturers of fittings and producers of windows and doors.

Technical level of our products is strictly controlled due to Quality Management System ISO 9001:9008. The quality of the products is confirmed by a number of certificates issued by both domestic and foreign Certification Bodies.



We have ambitions that we want to implement. Our strengths are modern technologies, a wide range of products, their high quality and marketing activities covering the whole of Europe. In this way we gain new markets.

We use European funds.



A L U M I N U M
handles

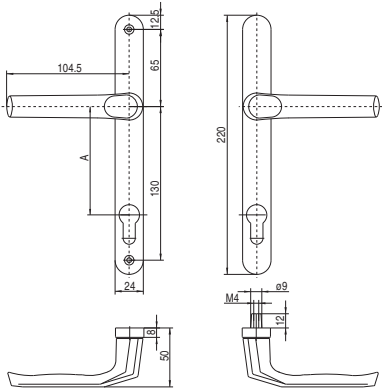
LEVER

Aluminium lever on back plate, screws M4, spindle length 7mm or 8mm, no return spring.
Finishing: powder coated - white RAL 9016, bronze RAL 8019, RAL 8022, anodized F1, F2, F3, F4, F9.



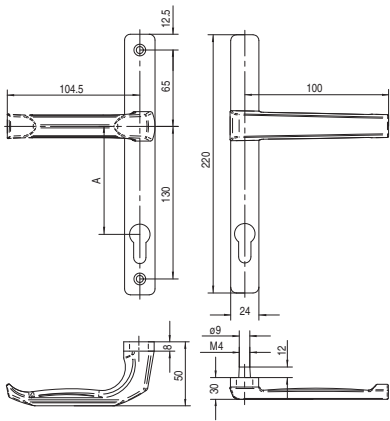
A
70
92

Lever



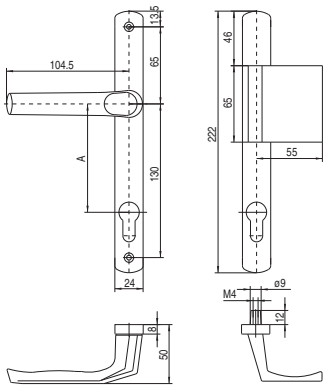
A
70
92

Lever set with low handle for roller shutters



A
70
92

Lever set with pad handle type L



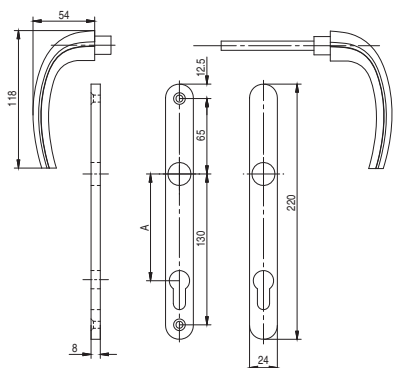
A set of aluminium door back plates fixed with screws M4, lever set with spindle length 7 or 8mm, fixed with hex head screw M6, no return spring.

Finishing: powder coated - white RAL 9016, bronze RAL 8019, RAL 8022, anodized F1.

Lever with hex head screw M6

TYPE

24/1/1031



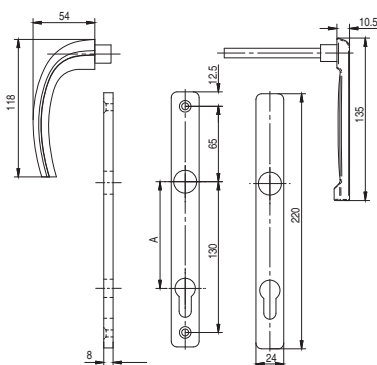
A
70
92



Lever set with low handle for roller shutters

TYPE

24R/2/1031



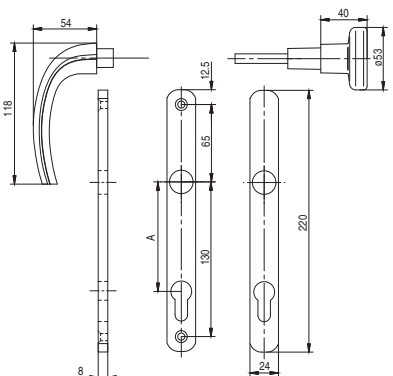
A
70
92



Lever set with knob
(rotational version)

TYPE

24/3/1031 G5



A
70
92



* available in version with fixed knob

LEVER

Aluminium lever on back plate, screws M5, spindle length 7mm or 8mm, no return spring, with one-sided or double-sided springs.

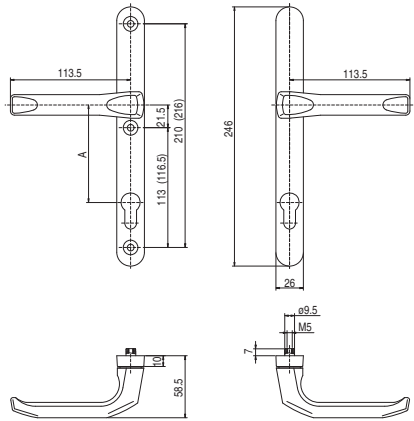
Finishing: powder coated - white RAL 9016, bronze RAL 8019, RAL 8022, anodized F1, F2, F3, F4, F9.

TYPE
26/1003



A
72
92

Lever

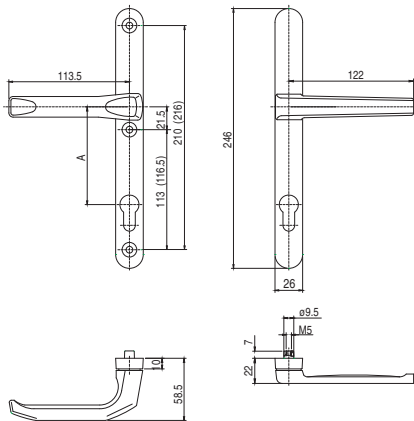


TYPE
26R/1003



A
72
92

Lever set with low handle for roller shutters

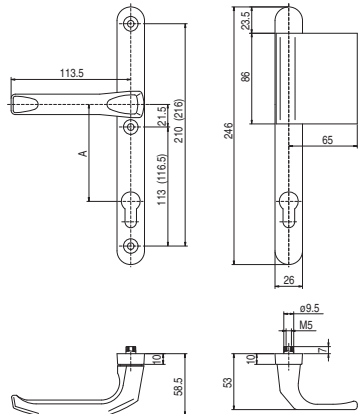


TYPE
26/1003 L



A
72
92

Lever set with pad handle type L

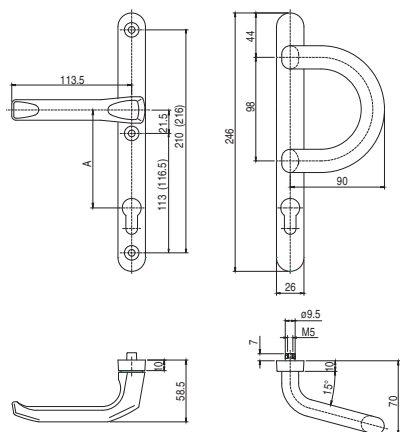


Aluminium lever on back plate, screws M5, spindle length 8mm, no return spring, with one-sided or double-sided springs.

Finishing: powder coated - white RAL 9016, bronze RAL 8019, RAL 8022, anodized F1, F2, F3, F4, F9.

Lever set with pad handle type P

TYPE
26/1003 P

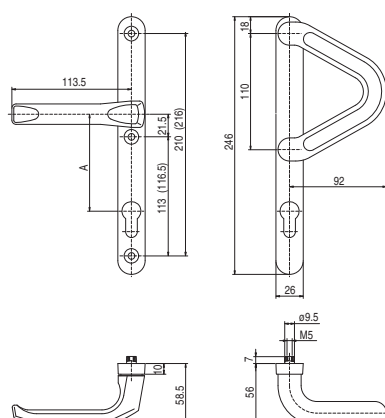


A
72
92



Lever set with pad handle type V

TYPE
26/1003 V

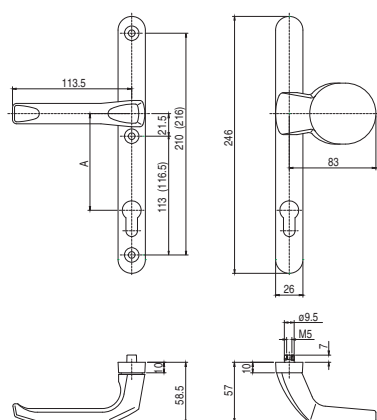


A
72
92



Lever set with knob

TYPE
26/1003 G



A
72
92



LEVER

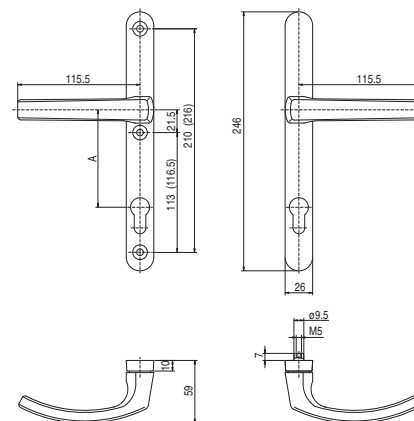
Aluminium lever on back plate, screws M5, spindle length 8mm, no return spring, with one-sided or double-sided springs.

Finishing: powder coated - white RAL 9016, bronze RAL 8019, RAL 8022, anodized F1, F2, F3, F4, F9.

TYPE
26/1005



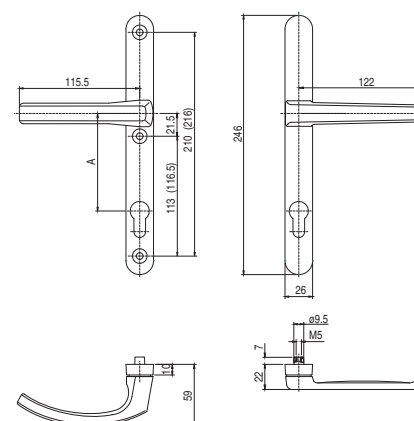
Lever



TYPE
26R/1005



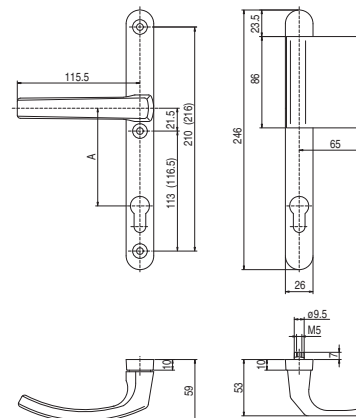
Lever set with low handle for roller shutters



TYPE
26/1005 L



Lever set with pad handle type L

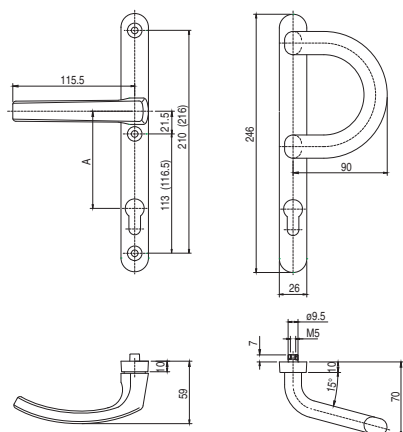


Aluminium lever on back plate, screws M5, spindle length 8mm, no return spring, with one-sided or double-sided springs.

Finishing: powder coated - white RAL 9016, bronze RAL 8019, RAL 8022, anodized F1, F2, F3, F4, F9.

Lever set with pad handle type P

TYPE
26/1005 P

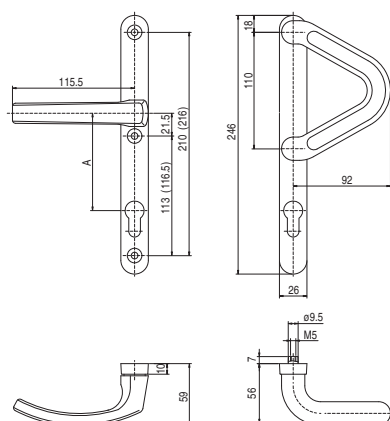


A
72
92



Lever set with pad handle type V

TYPE
26/1005 V

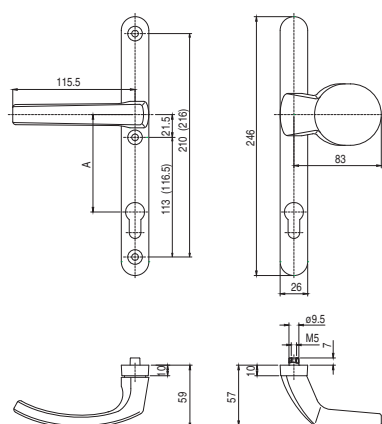


A
72
92



Lever set with knob

TYPE
26/1005 G



A
72
92



Aluminium lever on back plate, screws M5, spindle length 8mm, no return spring, with one-sided or double-sided springs.

Finishing: powder coated - white RAL 9016, bronze RAL 8019, RAL 8022, anodized F1, F2, F3, F4, F9.

TYPE
26/1200



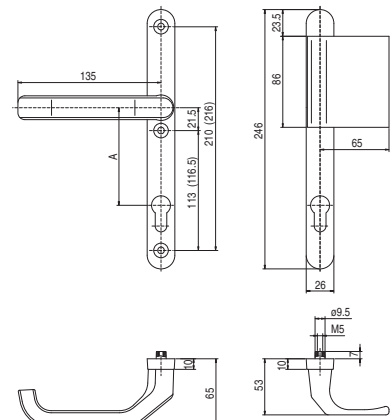
TYPE
26R/1200



TYPE
26/1200 L



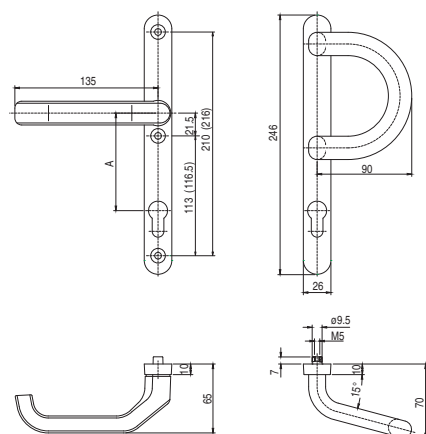
Lever



Aluminium lever on back plate, screws M5, spindle length 8mm, no return spring, with one-sided or double-sided springs.

Finishing: powder coated - white RAL 9016, bronze RAL 8019, RAL 8022, anodized F1, F2, F3, F4, F9.

Lever set with pad handle type P

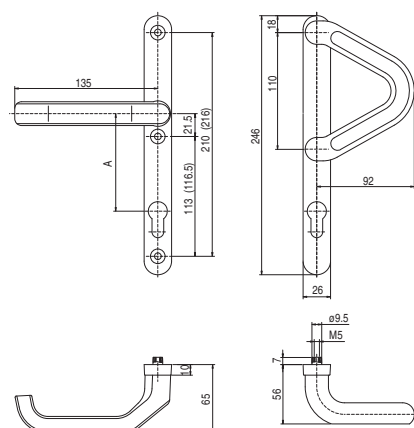


TYPE
26/1200 P

A
72
92



Lever set with pad handle type V

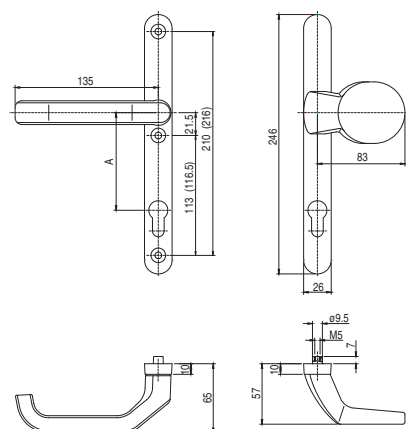


TYPE
26/1200 V

A
72
92



Lever set with knob



TYPE
26/1200 G

A
72
92



LEVER

Aluminium lever on back plate, screws M5, spindle length 8mm, no return spring, with one-sided or double-sided springs.

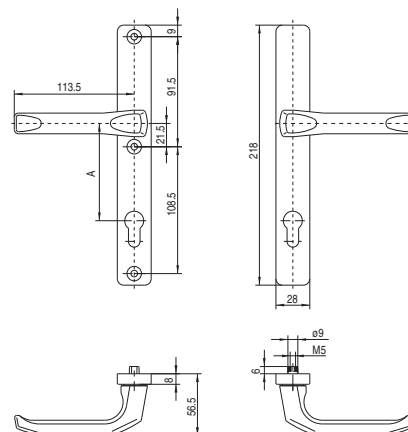
Finishing: powder coated - white RAL 9016, bronze RAL 8019, RAL 8022, anodized F1.

TYPE
28/1003



A
70
72
92

Lever

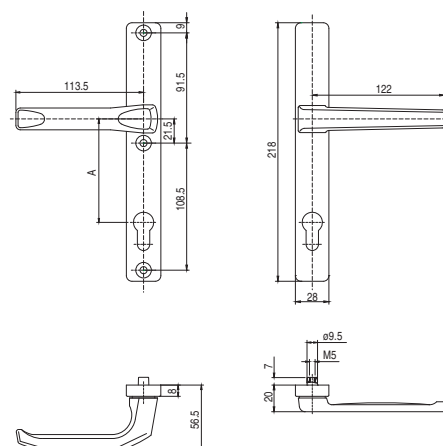


TYPE
28R/1003



A
70
72
92

Lever set with low handle for roller shutters

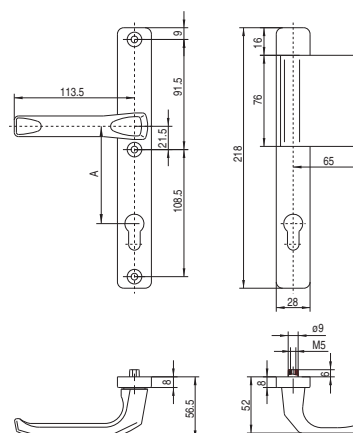


TYPE
28/1003 L



A
70
72
92

Lever set with pad handle type L

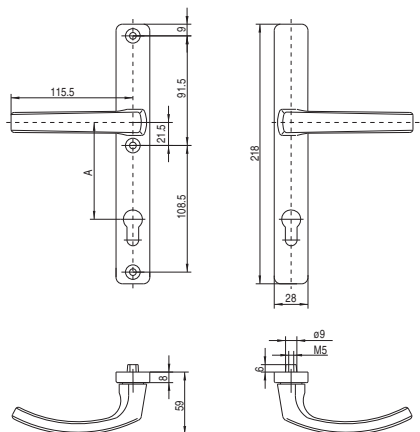


Aluminium lever on back plate, screws M5, spindle length 8mm, no return spring with one-sided or double-sided springs.

Finishing: powder coated - white RAL 9016, bronze RAL 8019, RAL 8022, anodized F1.

Lever

TYPE
28/1005

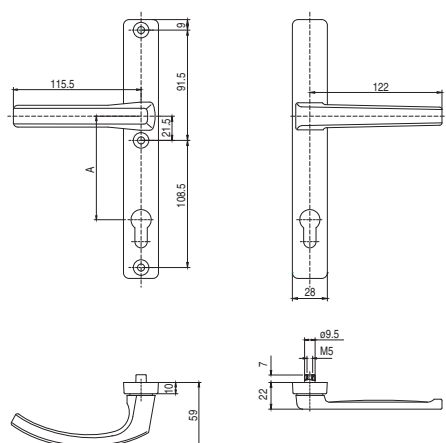


A
70
72
92



Lever set with low handle for roller shutters

TYPE
28R/1005

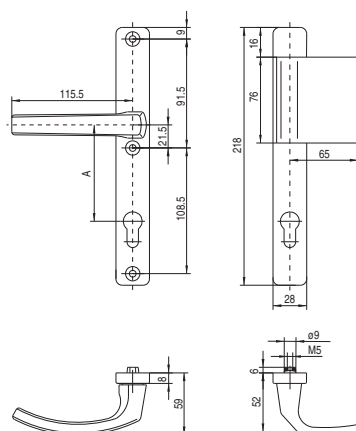


A
70
72
92



Lever set with pad handle type L

TYPE
28/1005 L



A
70
72
92



LEVER

Aluminium lever on back plate, screws M5, spindle length 8mm, no return spring, with one-sided or double-sided spring mechanism.

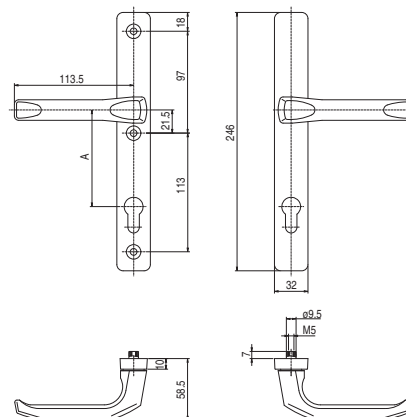
Finishing: powder coated - white RAL 9016, bronze RAL 8019, RAL 8022, anodized F1, F2, F3, F4, F9.

TYPE
32/1003



A
72
85
92

Lever

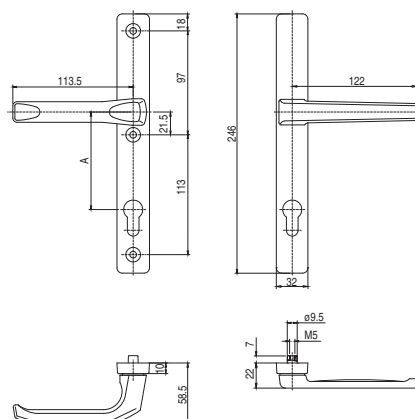


TYPE
32R/1003



A
72
85
92

Lever set with low handle for roller shutters

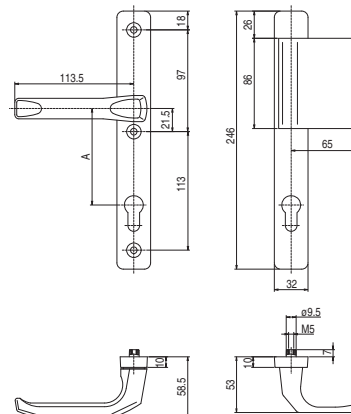


TYPE
32/1003 L



A
72
85
92

Lever set with pad handle type L

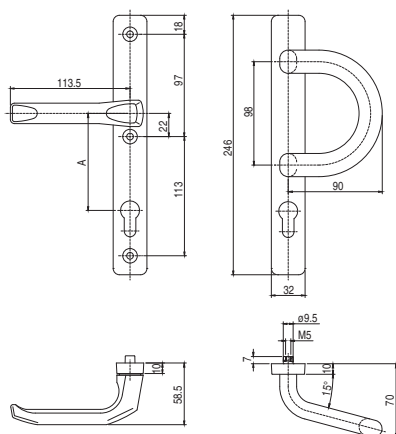


Aluminium lever on back plate, screws M5, spindle length 8mm, no return spring, with one-sided or double-sided spring mechanism.

Finishing: powder coated - white RAL 9016, bronze RAL 8019, RAL 8022, anodized F1, F2, F3, F4, F9.

Lever set with pad handle type P

TYPE
32/1003 P

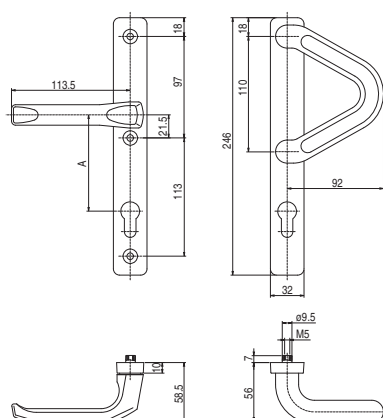


A
72
85
92



Lever set with pad handle type V

TYPE
32/1003 V

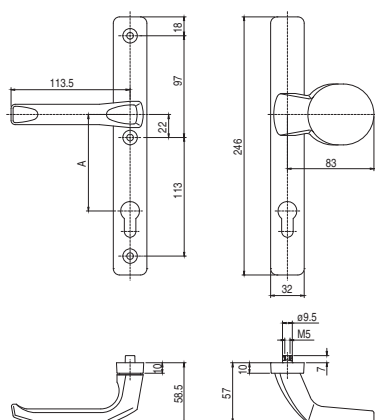


A
72
85
92



Lever set with knob

TYPE
32/1003 G



A
72
85
92

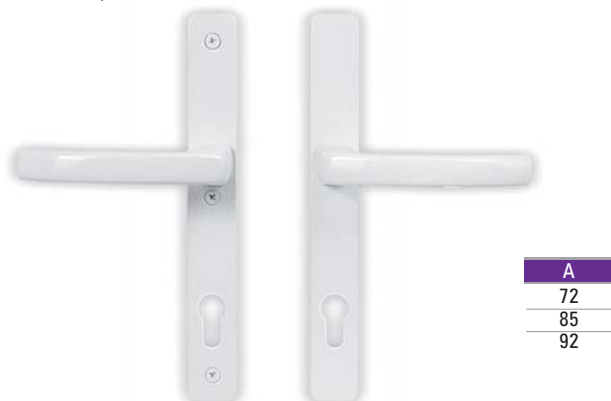


LEVER

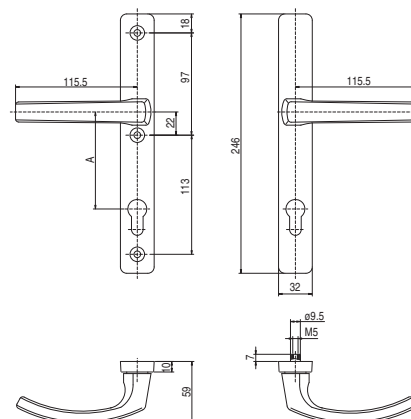
Aluminium lever on back plate, screws M5, spindle length 8mm, no return spring with one-sided or double-sided spring mechanism.

Finishing: powder coated - white RAL 9016, bronze RAL 8019, RAL 8022, anodized F1, F2, F3, F4, F9.

TYPE
32/1005



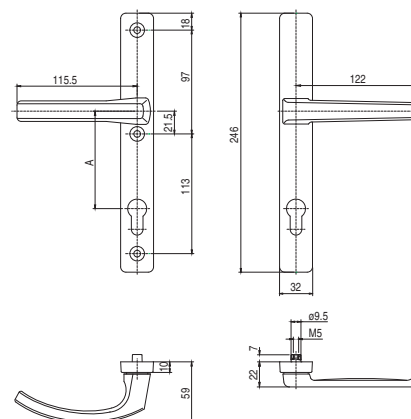
Lever



TYPE
32R/1005



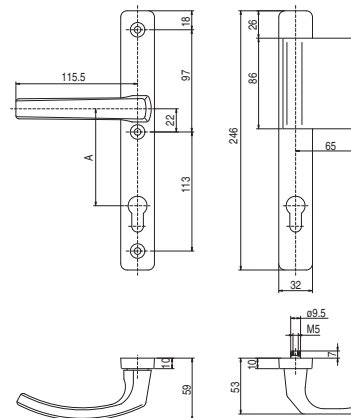
Lever set with low handle for roller shutters



TYPE
32/1005 L



Lever set with pad handle type L

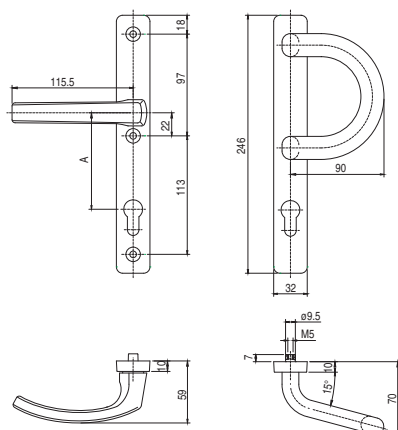


Aluminium lever on back plate, screws M5, spindle length 8mm, no return spring, with one-sided or double-sided spring mechanism.

Finishing: powder coated - white RAL 9016, bronze RAL 8019, RAL 8022, anodized F1, F2, F3, F4, F9.

Lever set with pad handle type P

TYPE
32/1005 P

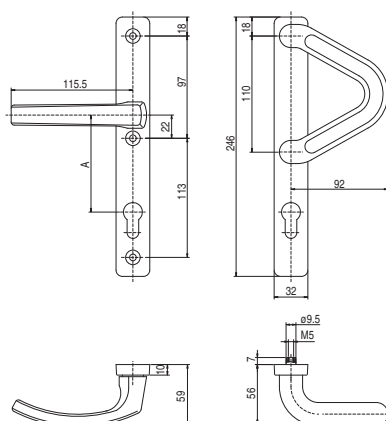


A
72
85
92



Lever set with pad handle type V

TYPE
32/1005 V

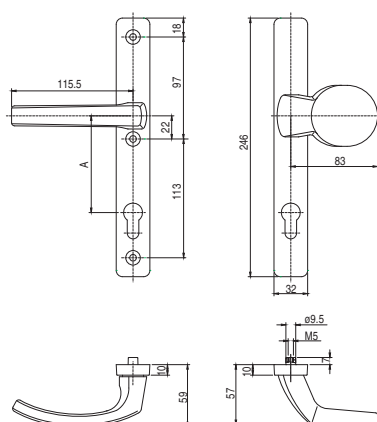


A
72
85
92



Lever set with knob

TYPE
32/1005 G



A
72
85
92



LEVER

Aluminium lever on back plate, screws M5, spindle length 8mm, no return spring, with one-sided or double-sided spring mechanism.

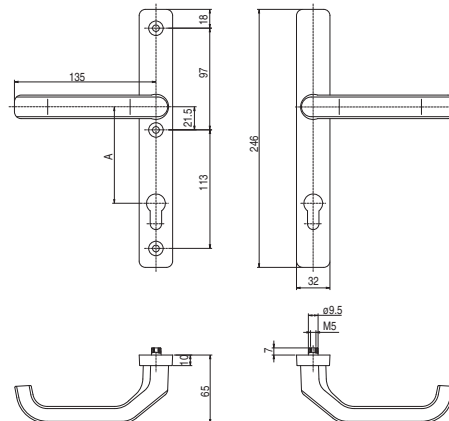
Finishing: powder coated - white RAL 9016, bronze RAL 8019, RAL 8022, anodized F1, F2, F3, F4, F9.

TYPE
32/1200



A
72
85
92

Lever

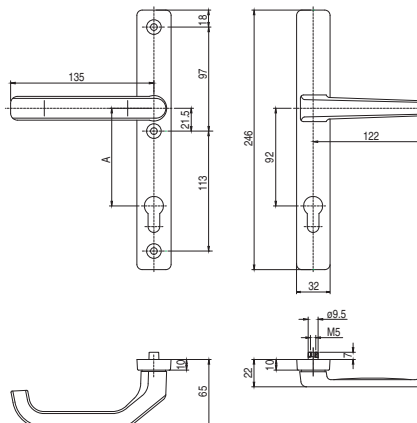


TYPE
32R/1200



A
72
85
92

Lever set with low handle for roller shutters

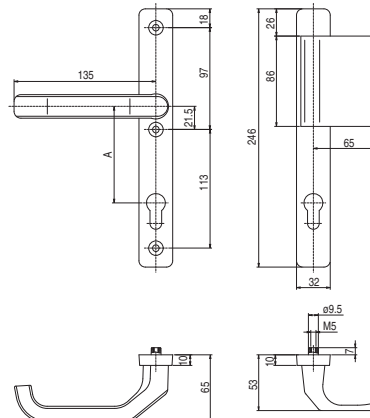


TYPE
32/1200 L



A
72
85
92

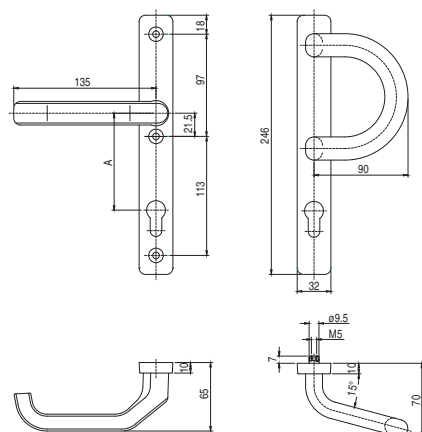
Lever set with pad handle type L



Aluminium lever on back plate, screws M5, spindle length 8mm, no return spring, with one-sided or double-sided spring mechanism.

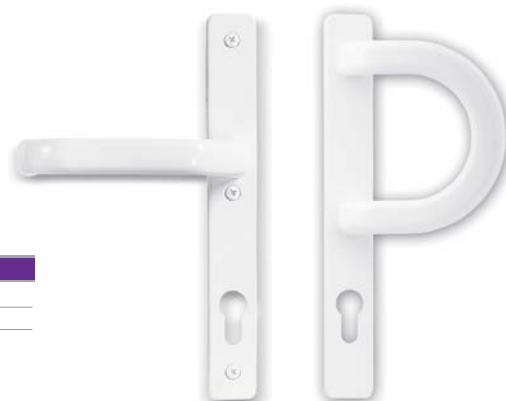
Finishing: powder coated - white RAL 9016, bronze RAL 8019, RAL 8022, anodized F1, F2, F3, F4, F9.

Lever set with pad handle type P

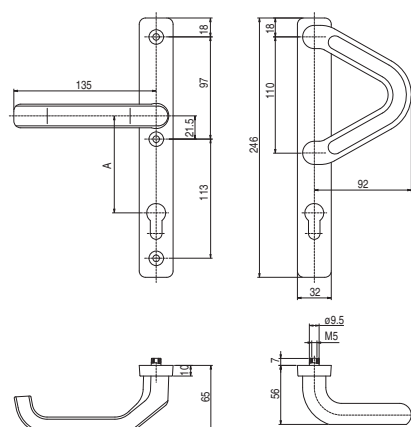


TYPE
32/1200 P

A
72
85
92



Lever set with pad handle type V

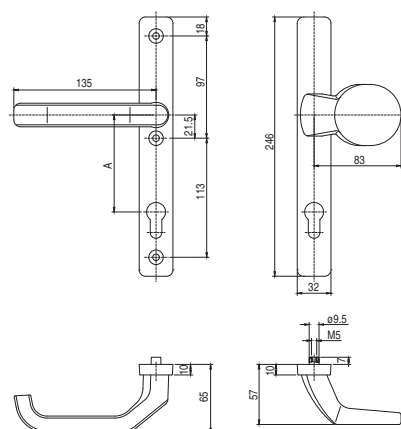


TYPE
32/1200 V

A
72
85
92



Lever set with knob



TYPE
32/1200 G

A
72
85
92



LEVER

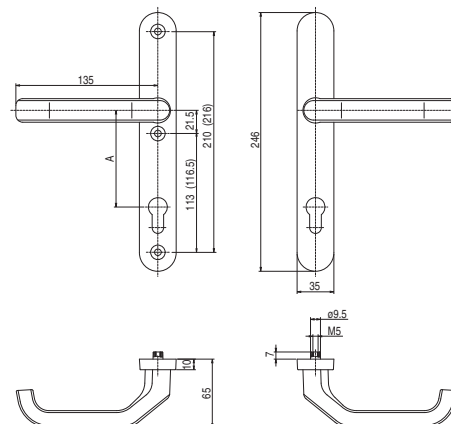
Aluminium lever on back plate, screws M5, spindle length 8mm, no return spring, with one-sided or double-sided spring mechanism.

Finishing: powder coated - white RAL 9016, bronze RAL 8019, RAL 8022, anodized F1, F2, F3, F4, F9.

TYPE
35/1200



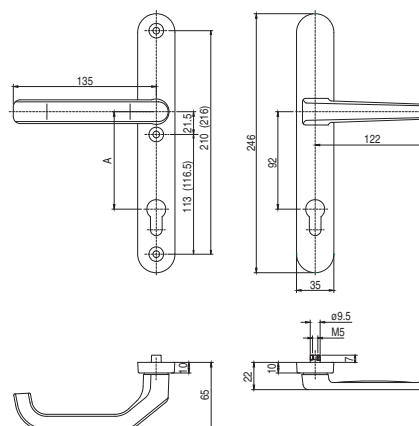
Lever



TYPE
35R/1200



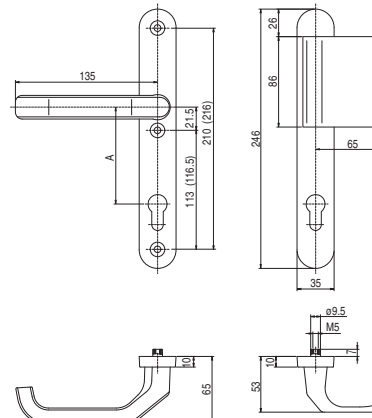
Lever set with low handle for roller shutters



TYPE
35/1200 L



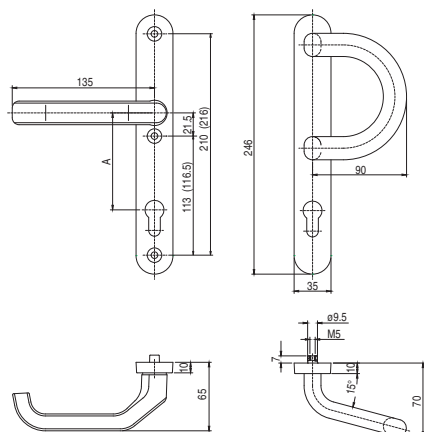
Lever set with pad handle type L



Aluminium lever on back plate, screws M5, spindle length 8mm, no return spring, with one-sided or double-sided spring mechanism.

Finishing: powder coated - white RAL 9016, bronze RAL 8019, RAL 8022, anodized F1, F2, F3, F4, F9.

Lever set with pad handle type P

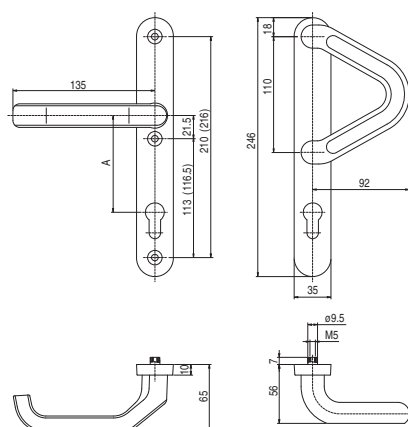


TYPE
35/1200 P



A
72
92

Lever set with pad handle type V

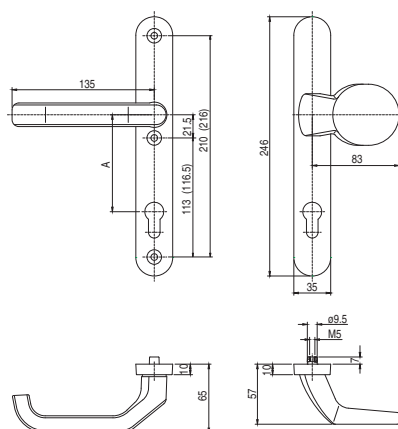


TYPE
35/1200 V



A
72
92

Lever set with knob



TYPE
35/1200 G



A
72
92

LEVER

High aluminium lever on back plate, screws M5, spindle length 8mm, no return spring, with one-sided or double-sided spring mechanism.

Finishing: powder coated - white RAL 9016, bronze RAL 8019, anodized F1.

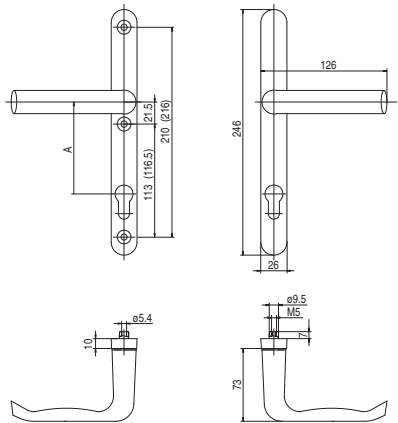
TYPE

26/1012 W



A
72
92

High lever



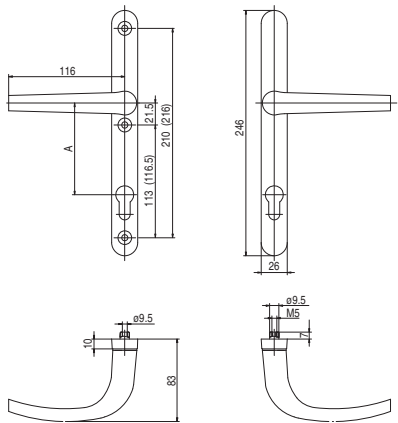
TYPE

26/1031 W



A
72
92

High lever



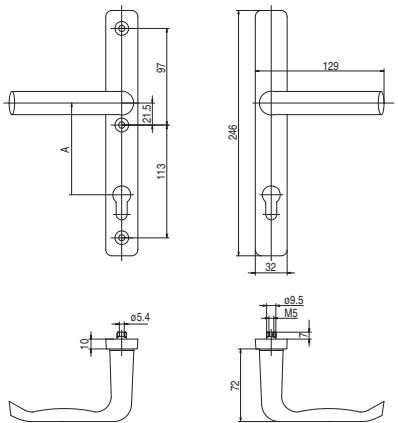
TYPE

32/1012 W



A
72
85
92

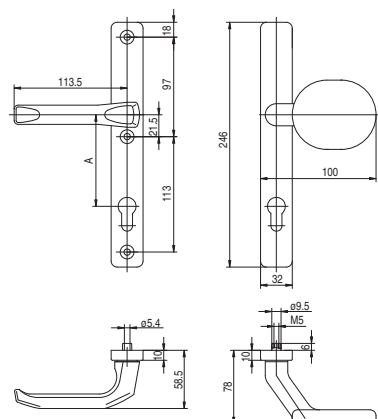
High lever



Aluminum lever and knob on back plate, screws M5, spindle length 8mm, with or without return spring.

Finishing: powder coated - white RAL 9016, bronze RAL 8019, anodized F1.

Lever set with fixed or rotational knob

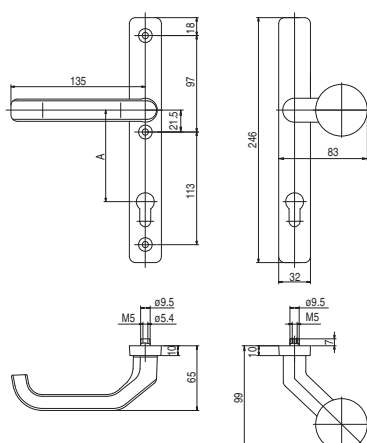


A
72
85
92



TYPE
32/1003 G3

Lever set with fixed or rotational knob

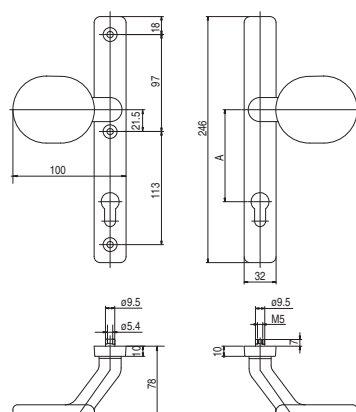


A
72
85
92



TYPE
32/1200 G4

Double-sided knob (fixed or rotational)

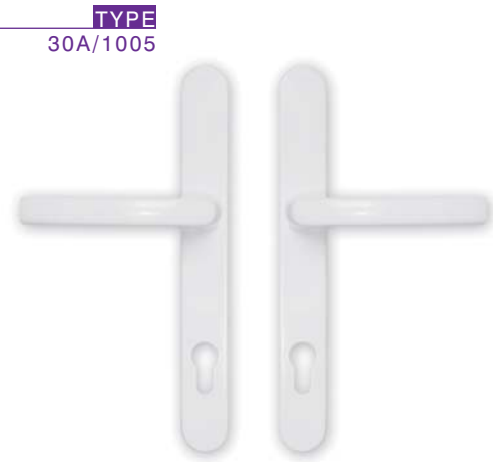


A
72
85
92



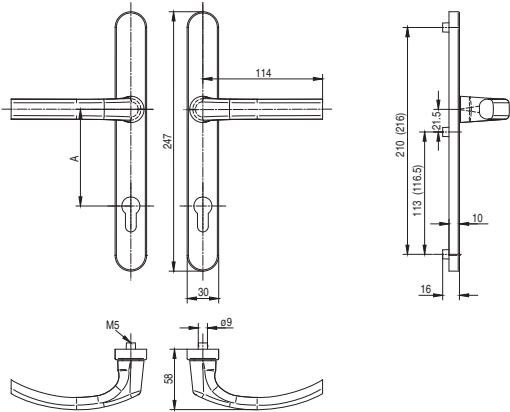
TYPE
32/G3

Aluminium lever set, zamak back plate with spring mechanism, screw covering base, screws M5 and spindle length 8mm.
Finishing: powder coated - white RAL 9016, bronze RAL 8019, RAL 8022, anodized F1, F2, F3, F4, F9.



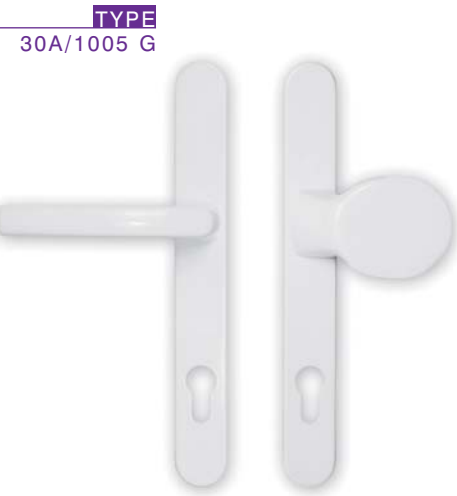
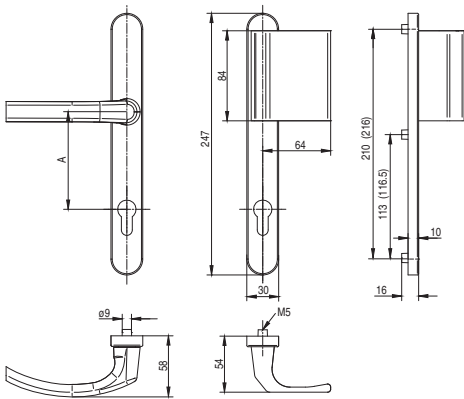
A
72
92

Lever



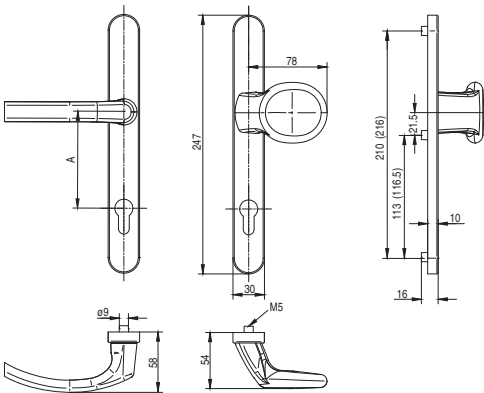
A
72
92

Lever set with pad handle type L



A
72
92

Lever set with knob

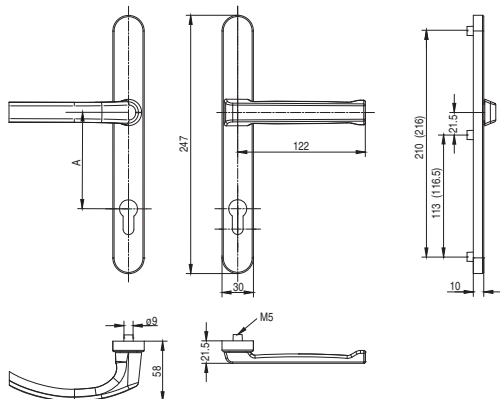


Aluminium lever set, zamak back plate with spring mechanism, screw covering base, screws M5 and spindle length 8mm.

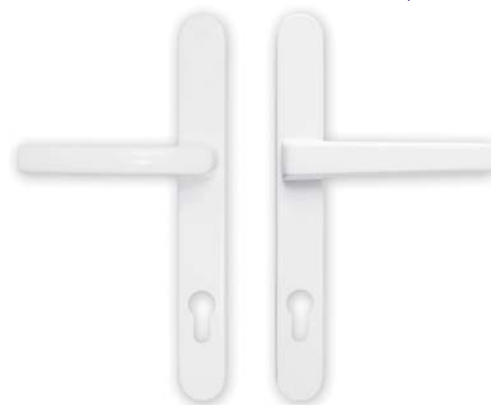
Finishing: powder coated - white RAL 9016, bronze RAL 8019, RAL 8022, anodized F1, F2, F3, F4, F9.

Lever set with low handle for roller shutters

TYPE
30AR/1005

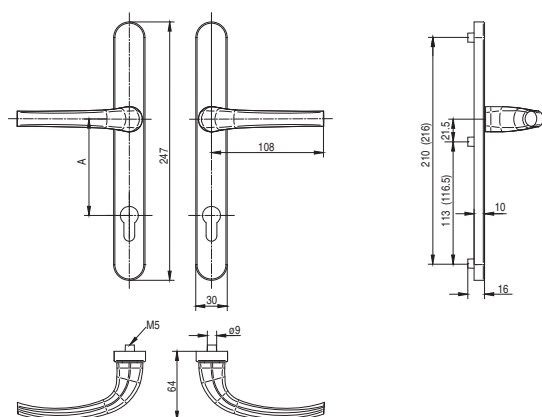


A
72
92



Lever

TYPE
30A/1031

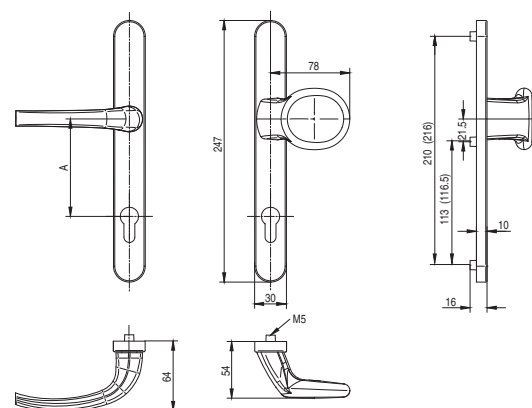


A
72
92

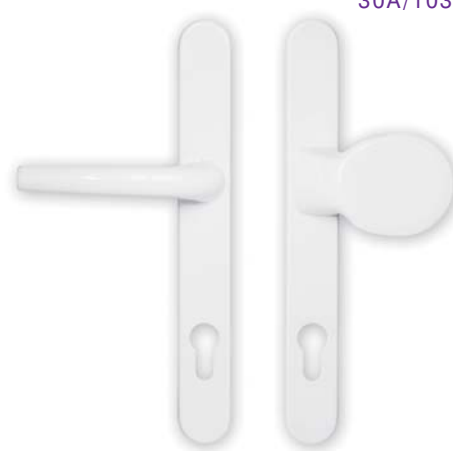


Lever set with knob

TYPE
30A/1031 G



A
72
92



PRODUCT WITH SKG-CERTIFICATE

Finishing: anodized F1.

30SKG/1005

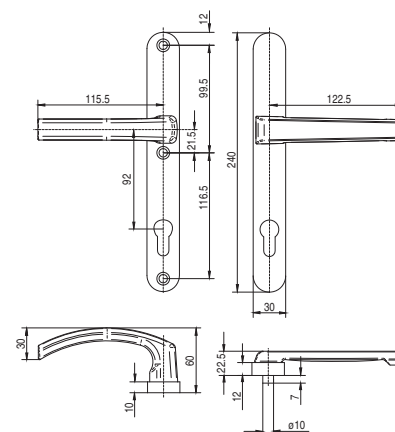


A
72
92

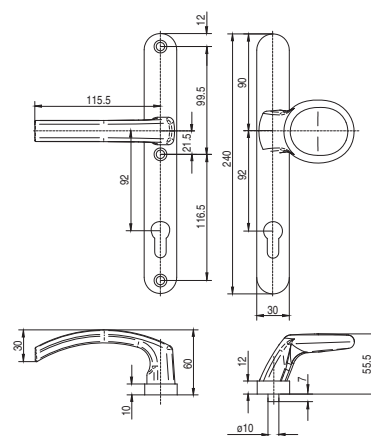
The technical drawing consists of three views of a mechanical component:

- Top View (Front View):** Shows a rectangular base with rounded corners. The overall width is 116.5 mm. The distance from the left edge to the center of the top hole is 115.5 mm. The distance from the bottom edge to the center of the bottom hole is 90 mm. The distance between the two holes is 89.5 mm. The radius of the corner is 12 mm. A dimension line labeled 'A' indicates the distance from the left edge to the center of the bottom hole.
- Side View:** Shows the profile of the component. The total height is 240 mm. The distance from the top surface to the center of the top hole is 90 mm. The distance from the bottom surface to the center of the bottom hole is 21.5 mm. The thickness of the base is 30 mm.
- Cross-Section View:** Shows the internal structure of the component. The outer radius is 62 mm. The inner radius is 12 mm. The thickness of the base is 7 mm. The diameter of the central hole is $\varnothing 10$. The distance from the outer edge to the center of the hole is 60 mm. The distance from the inner edge to the center of the hole is 10 mm.

30SKG/1005 R



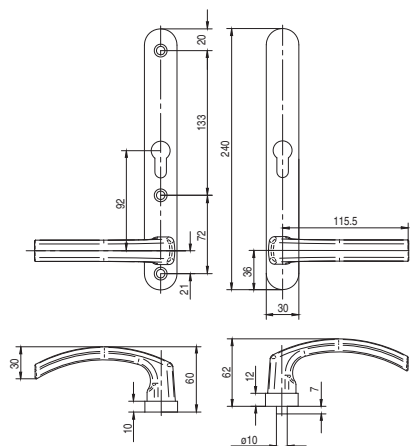
30SKG/1005 G



Aluminium lever on back plate, screws M6, threaded steel sockets M6, spindle length 8mm, no return spring.

Finishing: anodized F1.

Lever for senior

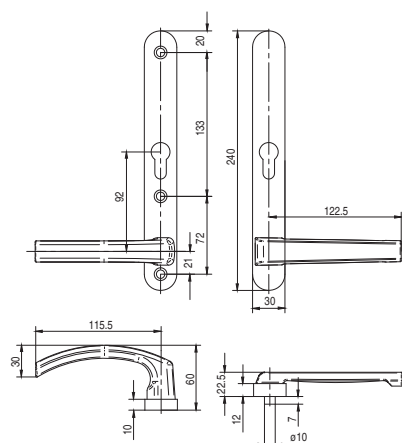


TYPE
30SKG/1005

SENIOR



Lever set with low handle for roller shutters for seniors

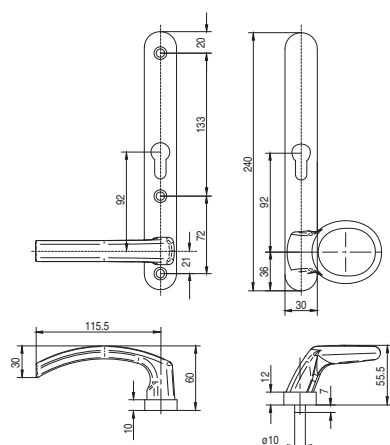


TYPE
30SKG/1005 R

SENIOR



Lever set with knob for seniors



TYPE
30SKG/1005 G

SENIOR



LEVER

PRODUCT WITH ITB-CERTIFICATE

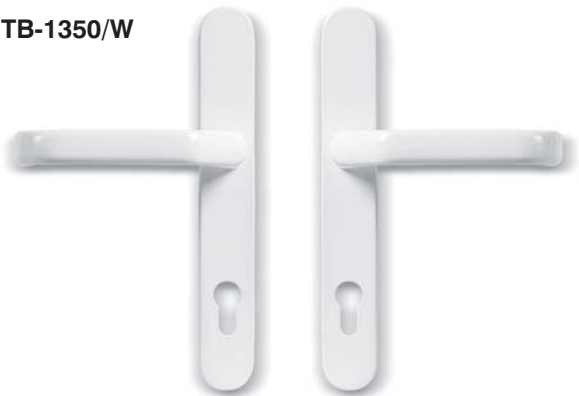
Aluminium lever set, zamak back plate with hardened steel cylinder and spring mechanism, screw covering base, screws M6 and spindle length 8mm.

Finishing: powder coated - white RAL 9016, bronze RAL 8019, RAL 8022, anodized F1, F2, F3, F4, F9.

TYPE

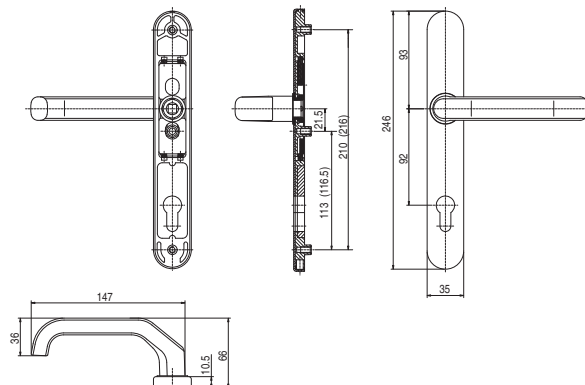
35A/1200

ITB-1350/W



Lever

3 7 - 0 1 3 2 B



TYPE

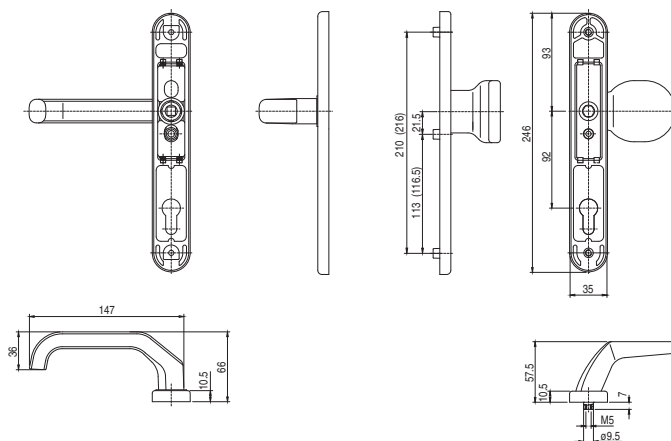
35A/1200 G

ITB-1350/W



Lever set with knob

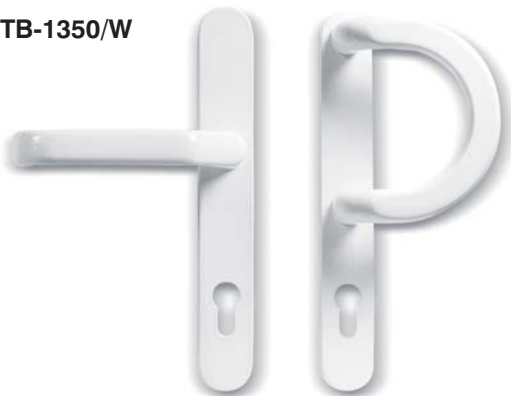
3 7 - 0 1 3 2 B



TYPE

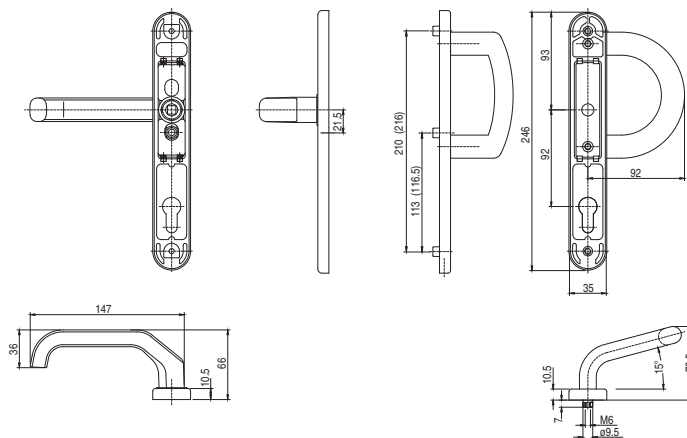
35A/1200 P

ITB-1350/W



Lever set with pad handle type P

3 7 - 0 1 3 2 B

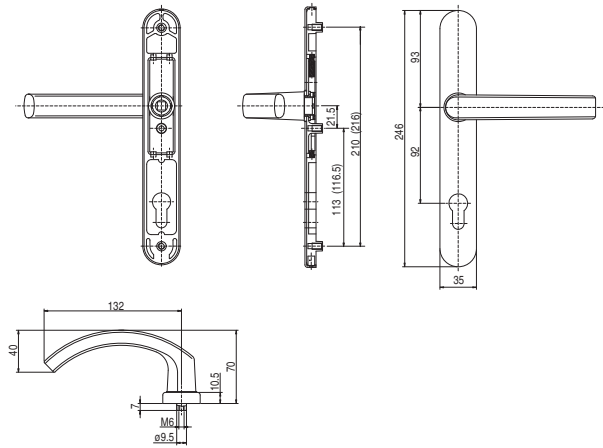


Aluminium lever set, zamak back plate with hardened steel cylinder and spring mechanism, screw covering base, screws M6 and spindle length 8mm.

Finishing: powder coated - white RAL 9016, bronze RAL 8019, RAL 8022, anodized F1, F2, F3, F4, F9.

3	7	-	0	1	3	2	B
---	---	---	---	---	---	---	---

Lever



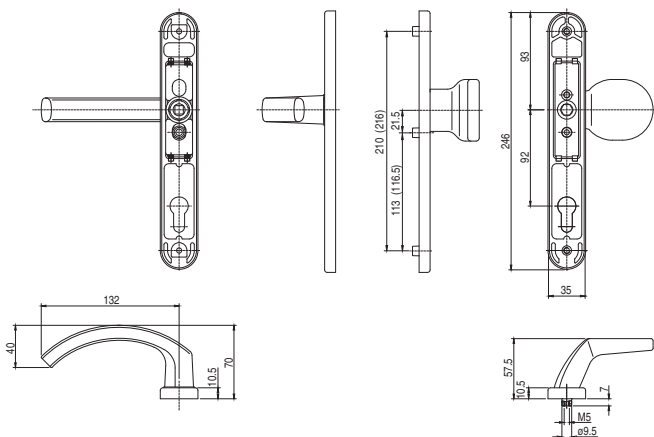
TYPE

35A/2200

ITB-1350/W

3	7	-	0	1	3	2	B
---	---	---	---	---	---	---	---

Lever set with knob



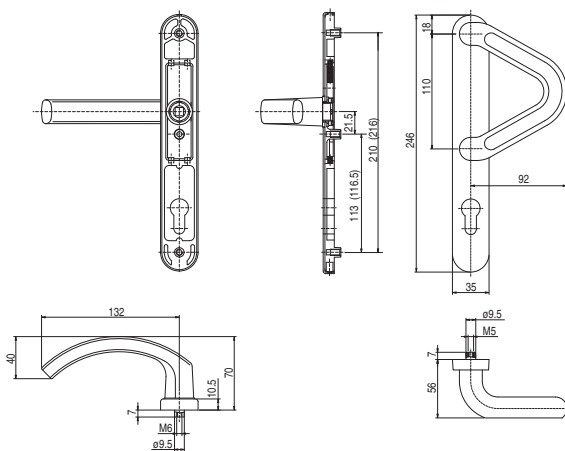
TYPE

35A/2200 G

ITB-1350/W

3	7	-	0	1	3	2	B
---	---	---	---	---	---	---	---

Lever set with pad handle type V



TYPE

35A/2200 V

ITB-1350/W

LEVER

PRODUCT WITH ITB-CERTIFICATE

Aluminum lever set with burglary protection of lock cylinder, zamak back plate with spring mechanism, screw covering base, screws M6 and spindle length 8 mm.

Finishing: powder coated - white RAL 9016, bronze RAL 8019, RAL 8022, anodized F1, F2, F3, F4, F9.

TYPE

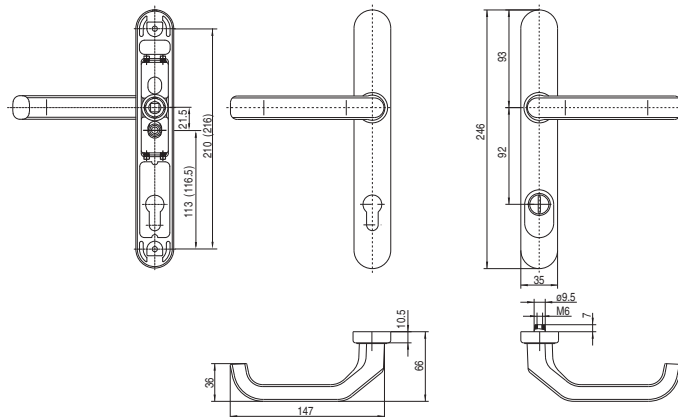
35A/1200 KZ

ITB-1350/W



Lever

3 7 - 0 1 3 2 B



TYPE

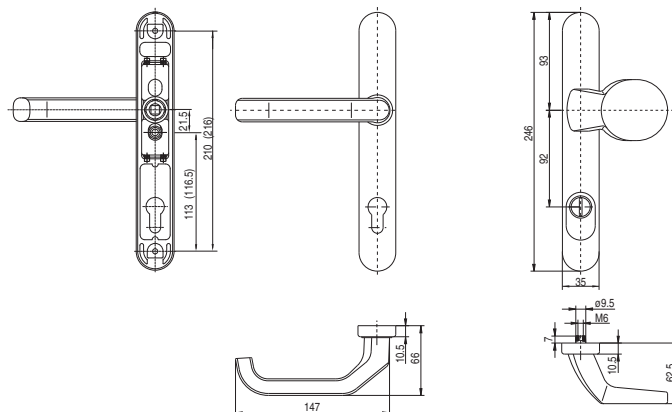
35A/1200 G KZ

ITB-1350/W



Lever set with knob

3 7 - 0 1 3 2 B



TYPE

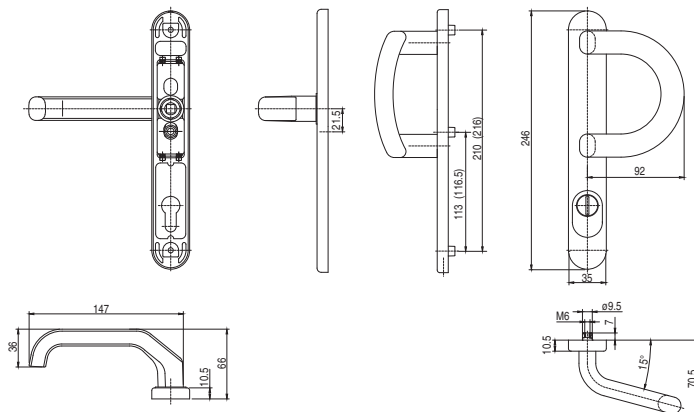
35A/1200 P KZ

ITB-1350/W



Lever set with pad handle type P

3 7 - 0 1 3 2 B

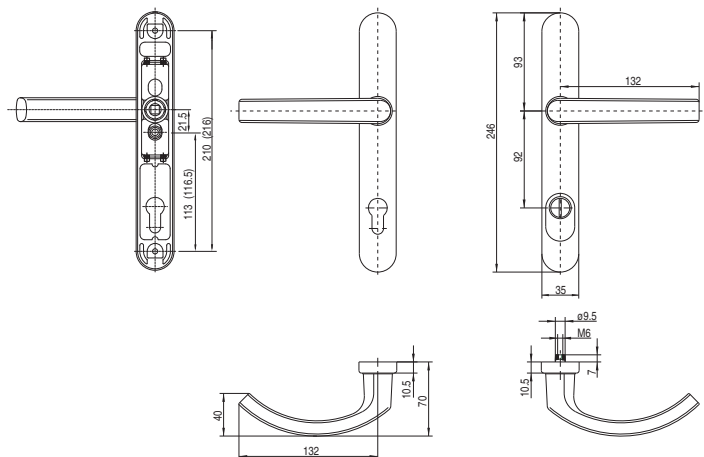


Aluminum lever set with burglary protection of lock cylinder, zamak back plate with spring mechanism, screw covering base secured with ball latch, screws M6 and spindle length 8 mm.

Finishing: powder coated - white RAL 9016, bronze RAL 8019, RAL 8022, anodized F1, F2, F3, F4, F9.

3	7	-	0	1	3	2	B
---	---	---	---	---	---	---	---

Lever



TYPE

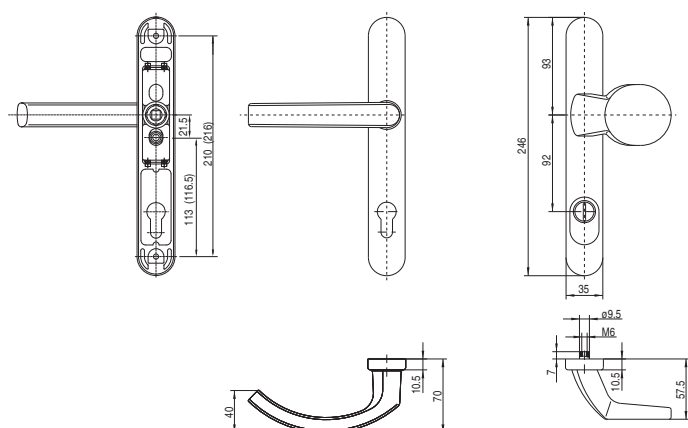
35A/2200 KZ

ITB-1350/W



3	7	-	0	1	3	2	B
---	---	---	---	---	---	---	---

Lever set with knob



TYPE

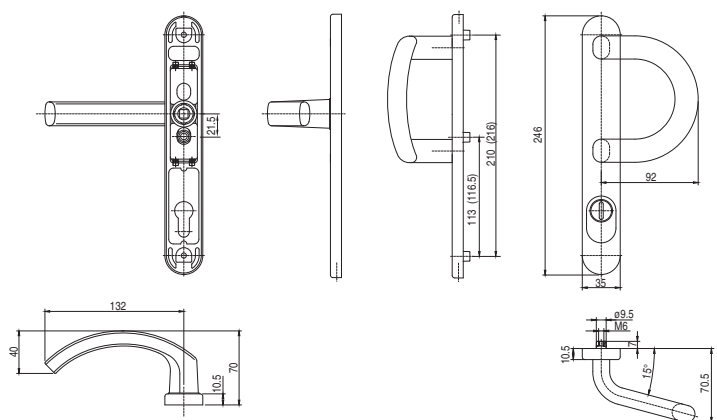
35A/2200 G KZ

ITB-1350/W



3	7	-	0	1	3	2	B
---	---	---	---	---	---	---	---

Lever set with pad handle type P



TYPE

35A/2200 P KZ

ITB-1350/W



LEVER

PRODUCT WITH SKG-CERTIFICATE

Aluminum lever set with burglary protection of lock cylinder, full external aluminium back plate with threaded steel sockets M6, internal zamak back plate with spring mechanism, screw covering base, screws M6 and spindle length 8mm.

Finishing: powder coated - white RAL 9016, bronze RAL 8019, RAL 8022, anodized F1, F2, F3, F4, F9.

TYPE 35/2000 KZ SKG

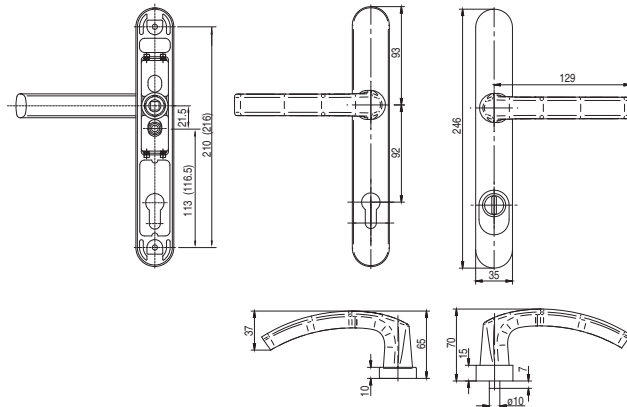


A

72

92

Lever



TYPE 35/2000 G KZ SKG

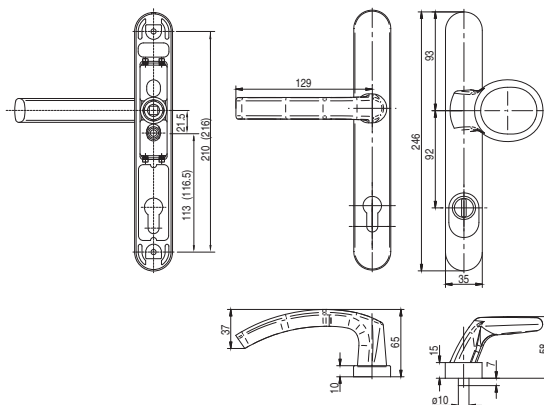


A

72

92

Lever set with knob



TYPE 35/2000 P KZ SKG

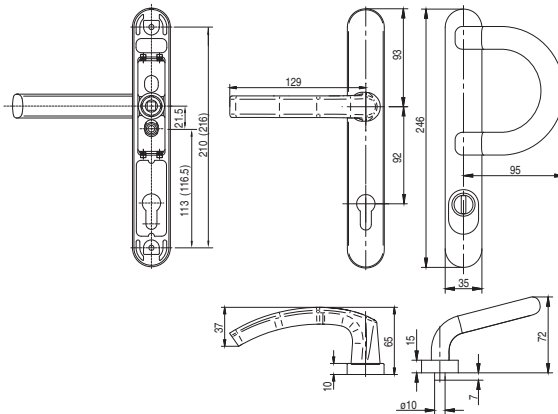


A

72

92

Lever set with pad handle type P



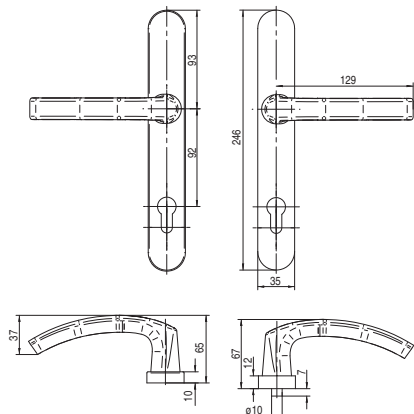
Aluminum lever set with burglary protection of lock cylinder, full external aluminium back plate with threaded steel sockets M6, internal zamak back plate with spring mechanism, screw covering base, screws M6 and spindle length 8mm.

Finishing: powder coated - white RAL 9016, bronze RAL 8019, RAL 8022, anodized F1, F2, F3, F4, F9.

Lever

TYPE

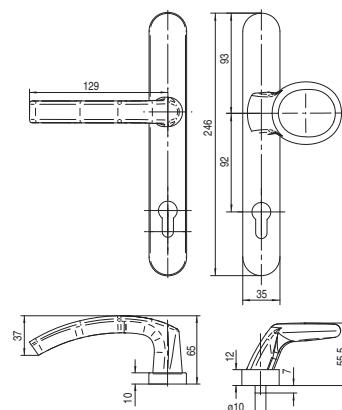
35A/2200 SKG



Lever set with knob

TYPE

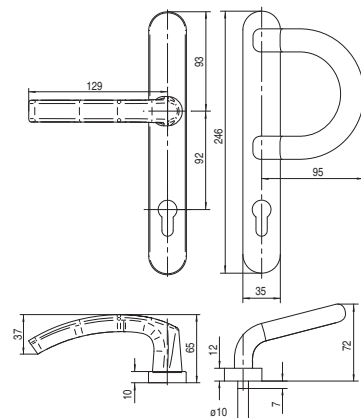
35A/2200 G SKG



Lever set with pad handle type P

TYPE

35A/2200 P SKG



LEVER

PRODUCT WITH ITB-CERTIFICATE

Aluminum lever set, zamak back plate with hardened steel cylinder and spring mechanism, screw covering base, screws M6 and spindle length 8 mm.

Finishing: powder coated - white RAL 9016, bronze RAL 8019, RAL 8022, anodized F1, F2, F3, F4, F9.

TYPE

52A/1200

ITB-1350/W



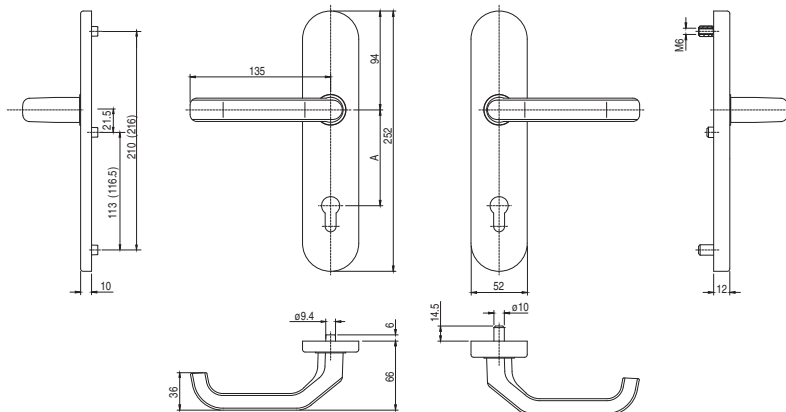
A

72

92

Lever

3 7 - 0 1 3 3 U



TYPE

52A/1200 P

ITB-1350/W



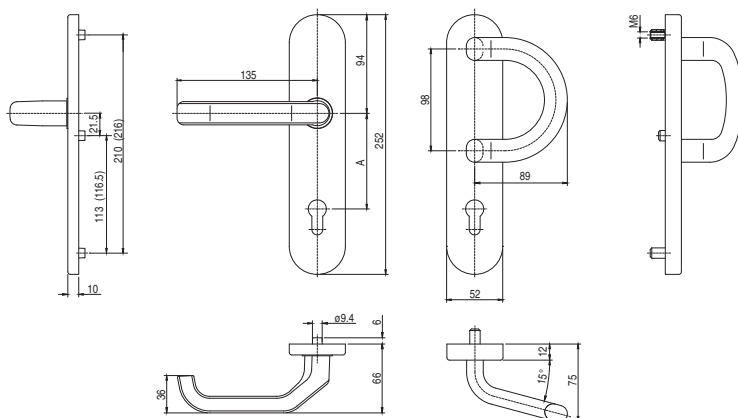
A

72

92

Lever set with pad handle type P

3 7 - 0 1 3 3 U



TYPE

52A/1200 G

ITB-1350/W



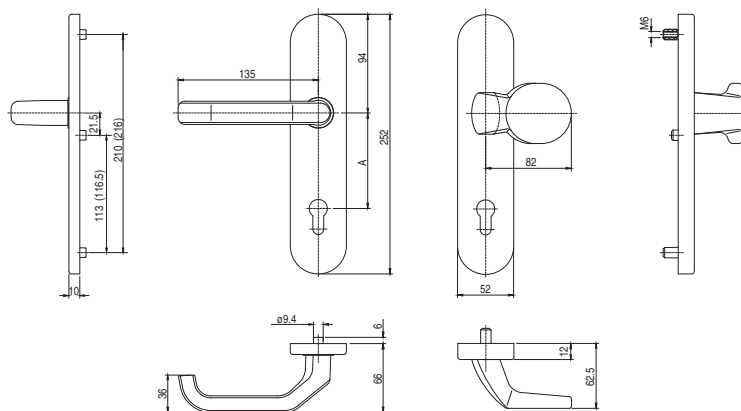
A

72

92

Lever set with knob

3 7 - 0 1 3 3 U

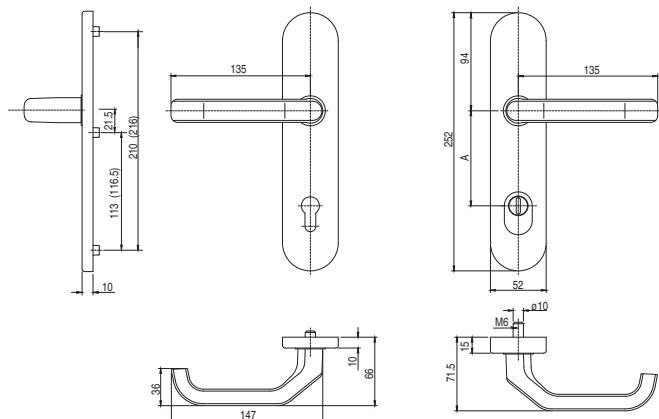


Aluminum lever set with burglary protection of lock cylinder, zamak back plate with hardened steel cylinder and spring mechanism, screw covering base, screws M6 ad spindle length 8mm.

Finishing: powder coated - white RAL 9016, bronze RAL 8019, RAL 8022, anodized F1, F2, F3, F4, F9.

3 7 - 0 1 3 3 U

Lever



A
72
92

TYPE

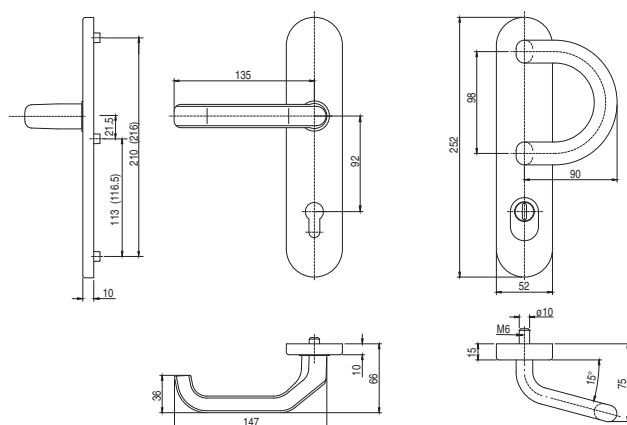
52A/1200 KZ

ITB-1350/W



3 7 - 0 1 3 3 U

Lever set with pad handle type P



TYPE

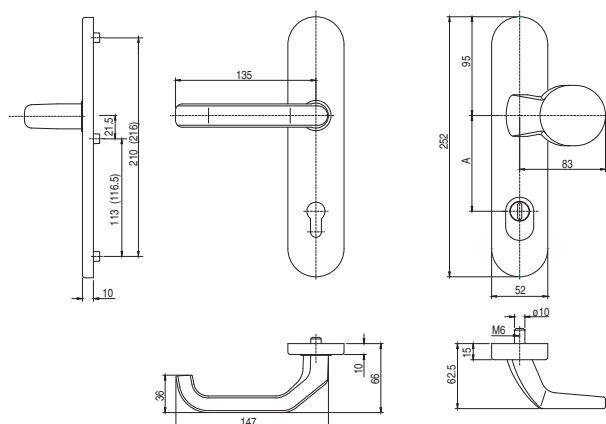
52A/1200 P KZ

ITB-1350/W



3 7 - 0 1 3 3 U

Lever set with knob



A
72
92

TYPE

52A/1200 G KZ

ITB-1350/W



LEVER

PRODUCT WITH ITB-CERTIFICATE

Aluminum lever set, zamak back plate with hardened steel cylinder and spring mechanism, screw covering base, screws M6 ad spindle length 8mm.

Finishing: powder coated - white RAL 9016, bronze RAL 8019, RAL 8022, anodized F1, F2, F3, F4, F9.

TYPE

52A/1200 E

ITB-1350/W



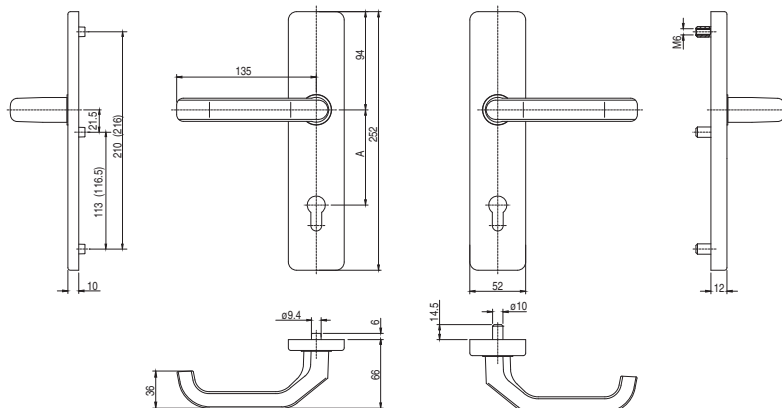
A

72

92

Lever

3 7 - 0 1 3 3 U



TYPE

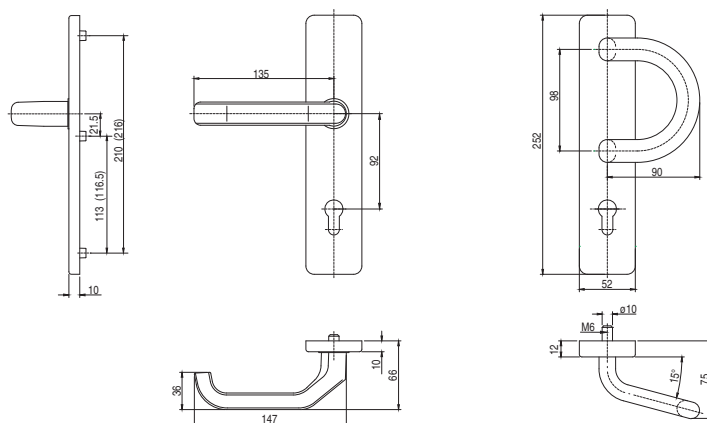
52A/1200 P E

ITB-1350/W



Lever set with pad handle type P

3 7 - 0 1 3 3 U



TYPE

52A/1200 G E

ITB-1350/W



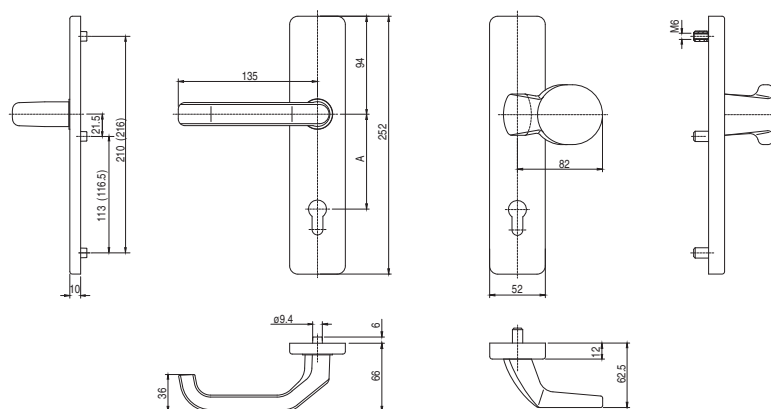
A

72

92

Lever set with knob

3 7 - 0 1 3 3 U

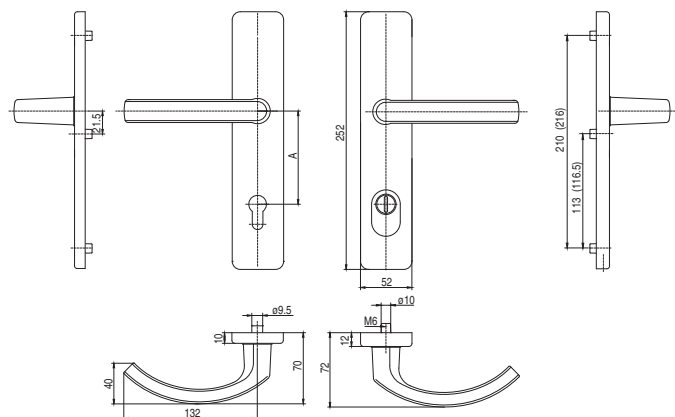


Aluminum lever set with burglary protection of lock cylinder, zamak back plate with hardened steel cylinder and spring mechanism, screw covering base, screws M6 ad spindle length 8mm.

Finishing: powder coated - white RAL 9016, bronze RAL 8019, RAL 8022, anodized F1, F2, F3, F4, F9.

3 7 - 0 1 3 3 U

Lever



TYPE

52A/1200 KZ E

ITB-1350/W



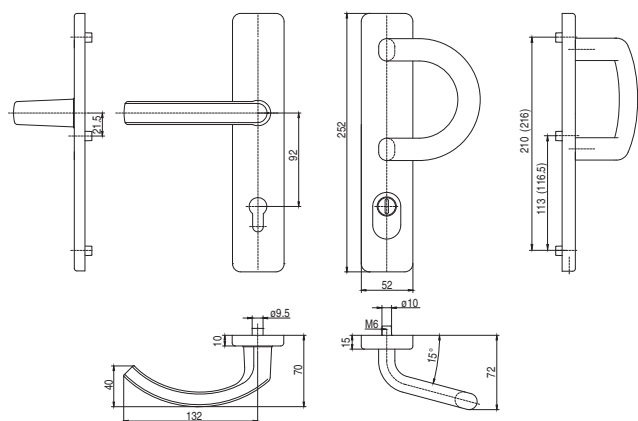
A

72

92

3 7 - 0 1 3 3 U

Lever set with pad handle type P



TYPE

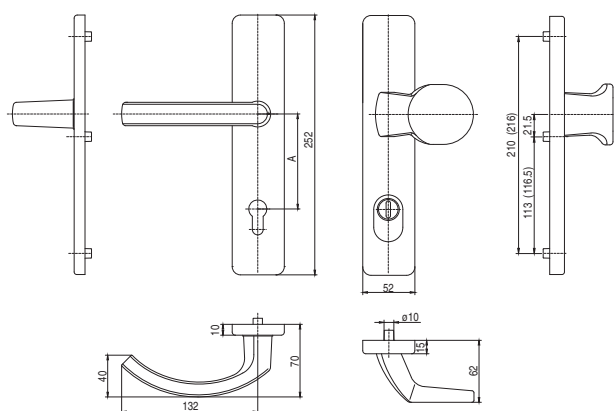
52A/1200 P KZ E

ITB-1350/W



3 7 - 0 1 3 3 U

Lever set with knob



TYPE

52A/1200 G KZ E

ITB-1350/W



A

72

92

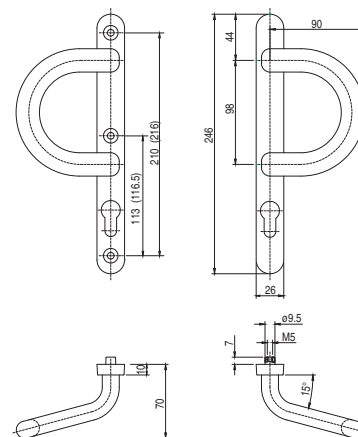
Double-sided pad handle with back plate, screws M5.

Finishing: powder coated - white RAL 9016, bronze RAL 8019, RAL 8022, anodized F1, F2, F3, F4, F9.

TYPE
26 P



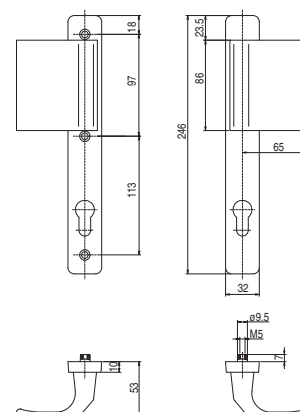
Double-sided pad handle type P



TYPE
32 L



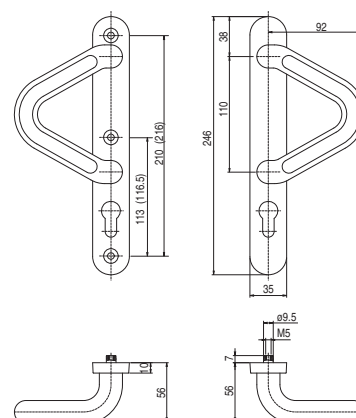
Double-sided pad handle type L



TYPE
35 V



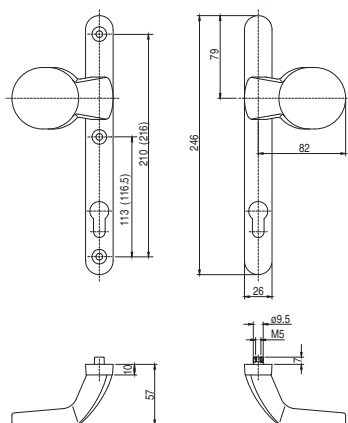
Double-sided pad handle type V



Double-sided knob with back plate, screws M5.

Finishing: powder coated - white RAL 9016, bronze RAL 8019, RAL 8022, anodized F1, F2, F3, F4, F9.

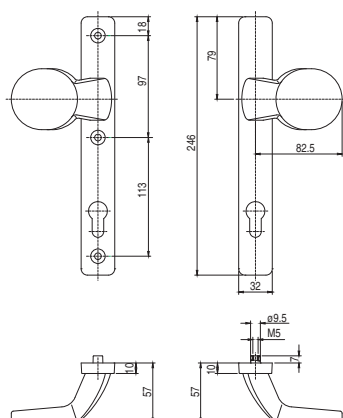
Double-sided knob



TYPE
26 G



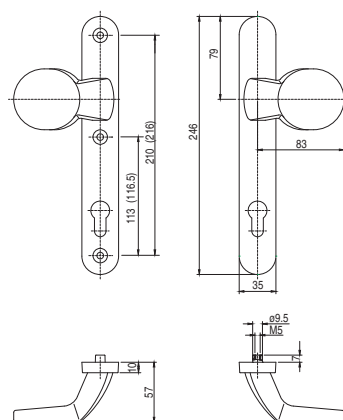
Double-sided knob



TYPE
32 G



Double-sided knob



TYPE
35 G



TUBULAR BOW-TYPE HANDLES

Aluminium tubular bow-type handles assembled with double-sided back plates, screws M6.

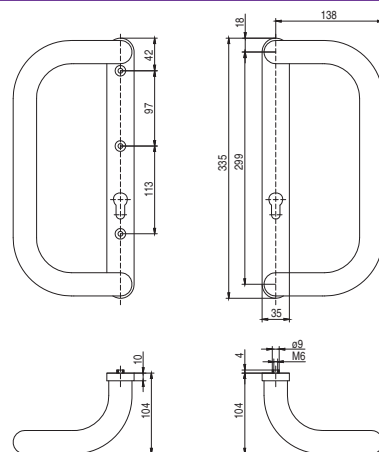
Finishing: powder coated - white RAL 9016, bronze RAL 8019, anodized F1, F4.

TYPE

P 300 D/P 300 D



Rectangular bow-type handle

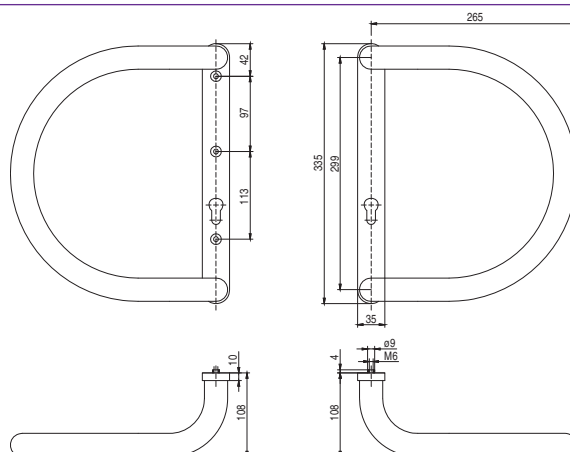


TYPE

P 300 O/P 300 O



Semi-circular bow-type handle

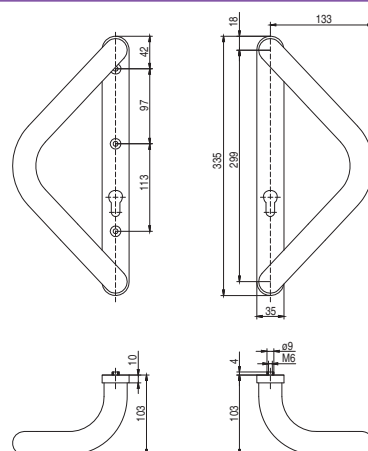


TYPE

P 300 V/P 300 V

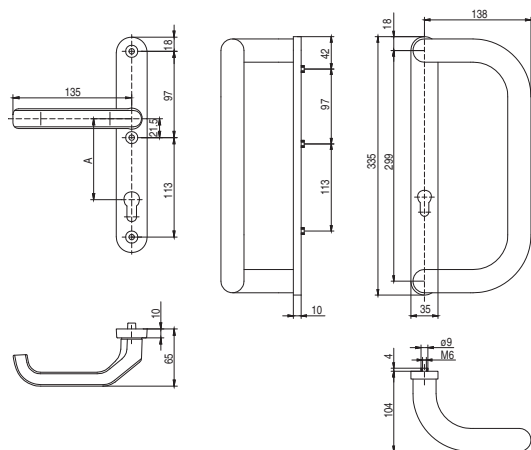


Triangular bow-type handle



Lever set with tubular bow-type handle assembled with double-sided back plate, screws M6, spindle length 8 mm, possibility to set the bow-type handle with any handle for interior doors.

Lever set with rectangular bow-type handle

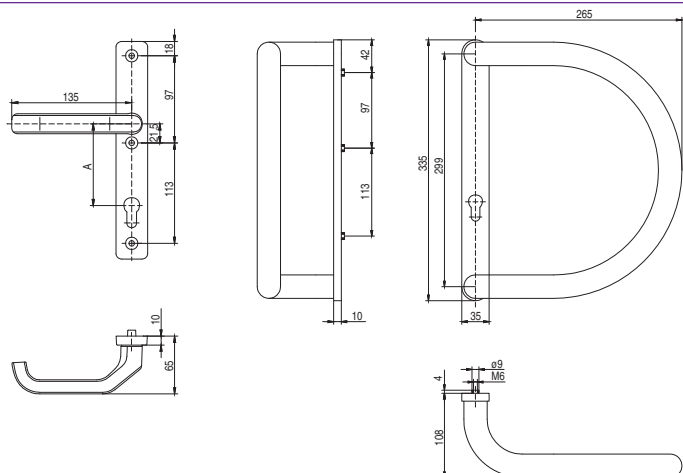


A
72
92



TYPE
35/1200/P 300 D

Lever set with semi-circular bow-type handle

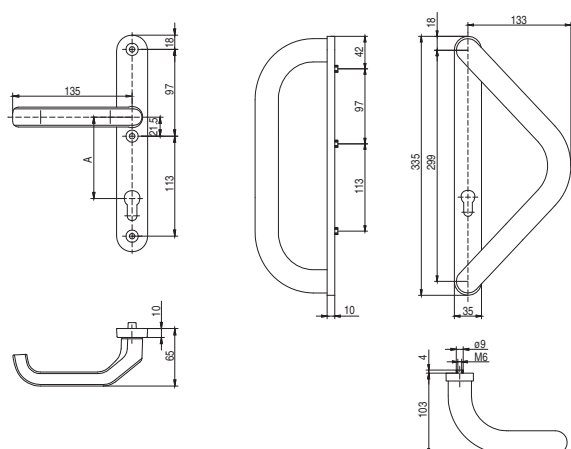


A
72
85
92



TYPE
32/1200/P 300 O

Lever set with triangular bow-type handle



A
72
92



TYPE
35/1200/P 300 V

LEVER

Aluminium door handle on zamak back plate, spring mechanism and aluminium cover cap.

Knob on zamak back plate, in fixed or rotational version, with aluminium cover cap.

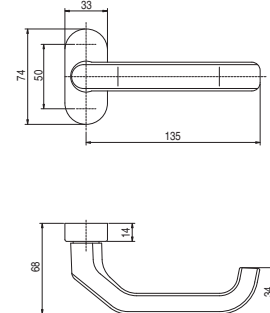
Finishing: powder coated - white RAL 9016, bronze RAL 8019, RAL 8022, anodized F1, F4, F9.

TYPE

R32/1200



Sectional door handle on oval back plate

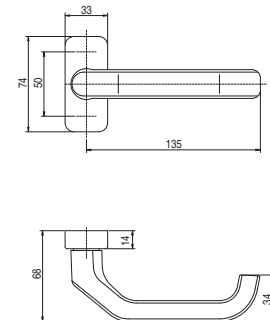


TYPE

R32/1200 E



Sectional door handle on rectangular back plate

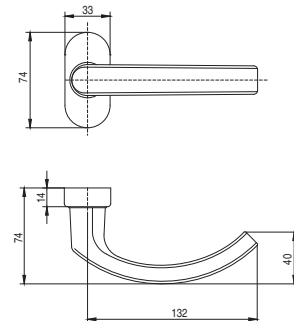


TYPE

R32/2200



Sectional door handle on oval back plate

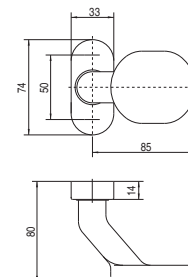


TYPE

R32/G3



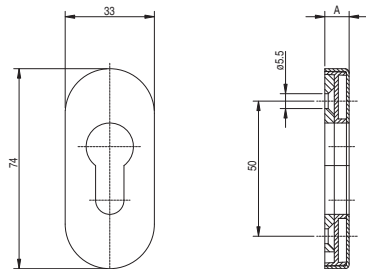
Knob on oval back plate



Cylinder back plate with zamak plate protecting against dismantling and aluminium cover cap.

Finishing: powder coated - white RAL 9016, bronze RAL 8019, RAL 8022, anodized F1, F2, F3, F4, F9.

Oval cylinder back plate

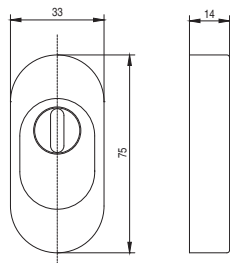


A
6
9



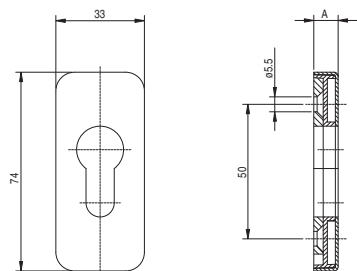
TYPE
33 PZ

Cylinder back plate with burglary protection



TYPE
33 KZ-1

Rectangular cylinder back plate

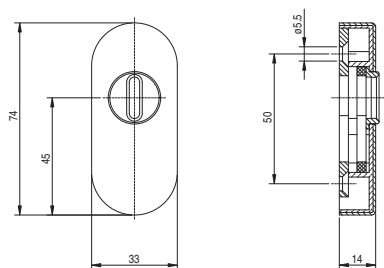


A
6
9



TYPE
33 PZ E

Cylinder back plate with burglary protection



TYPE
33 KZ-2

CYLINDER BACK PLATE

Cylinder back plates set. Interior side – round zamak back plate, cover cap in aluminium.

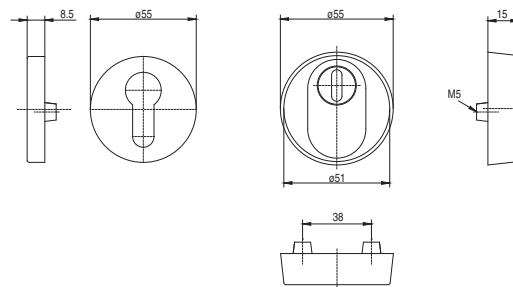
Exterior side in cast versions with possibility to secure the lock cylinder with burglary protection.

Finishing: aluminium - powder coated - white RAL 9016, bronze RAL 8019, RAL 8022, anodized F1, F2, F3, F4, F9.

TYPE 52 KZ



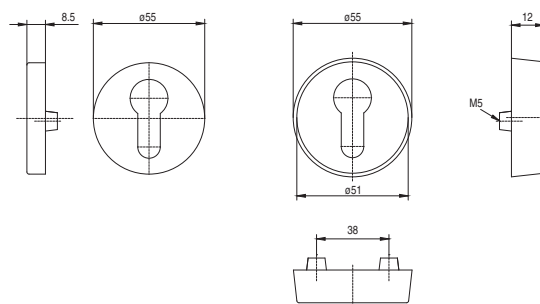
Cylinder back plates set with burglary protection



TYPE 52 PZ



Cylinder back plates set

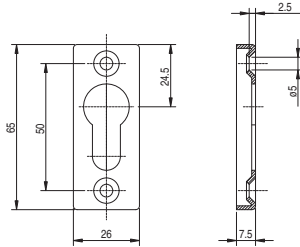


Cylinder back plate in extruded version.

Finishing: powder coated - white RAL 9016, bronze RAL 8019, RAL 8022.

Extruded uniform cylinder back plate

TYPE
26



INTERNAL DOOR HANDLES

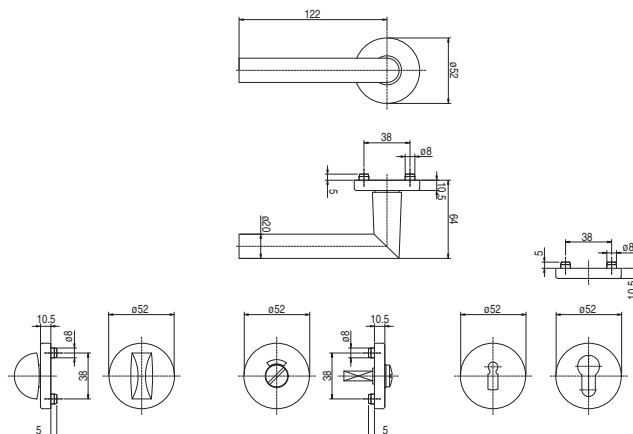
Aluminium door handle – round back plate, aluminium cover cap, additional back plates in versions: key, lock cylinder, WC, screws M5, spindle length 8 mm.

Finishing: anodized F1.

TYPE 1010



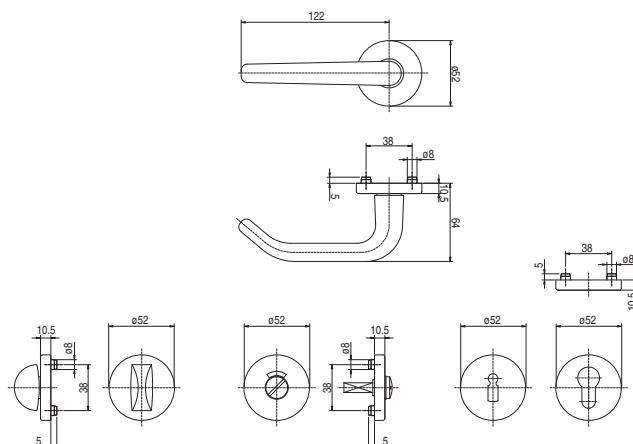
Lever for interior doors



TYPE 1015



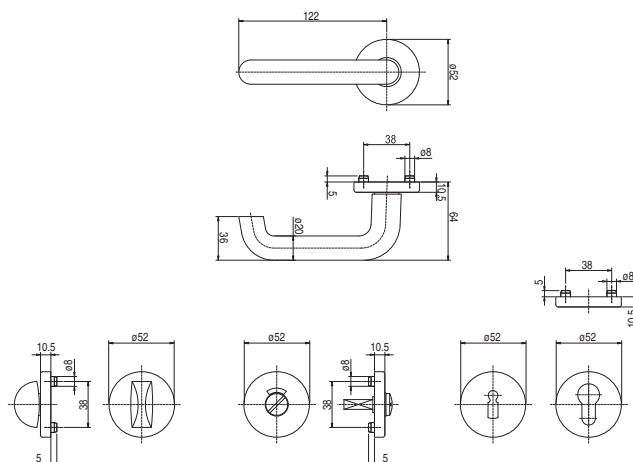
Lever for interior doors



TYPE 1040



Lever for interior doors

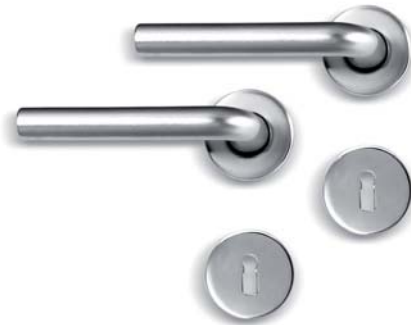
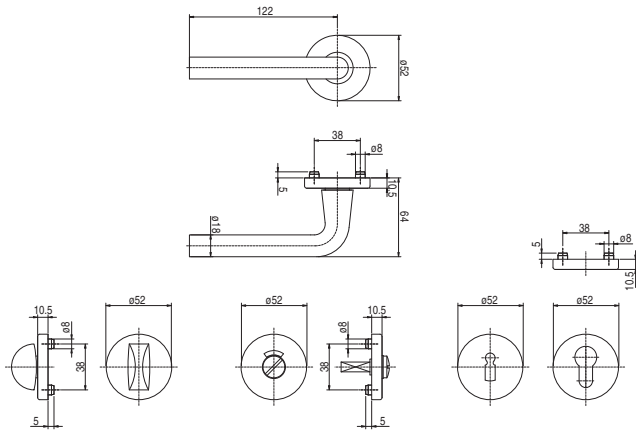


Aluminium door handle – round back plate, aluminium cover cap, additional back plates in versions: key, lock cylinder, WC, screws M5, spindle length 8 mm.

Finishing: anodized F1.

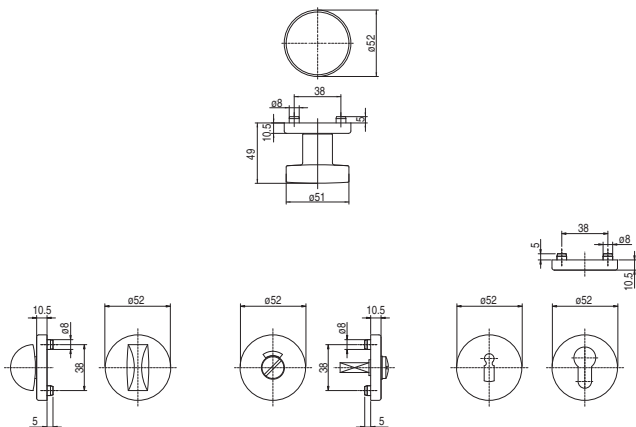
Lever for interior doors

TYPE
1070



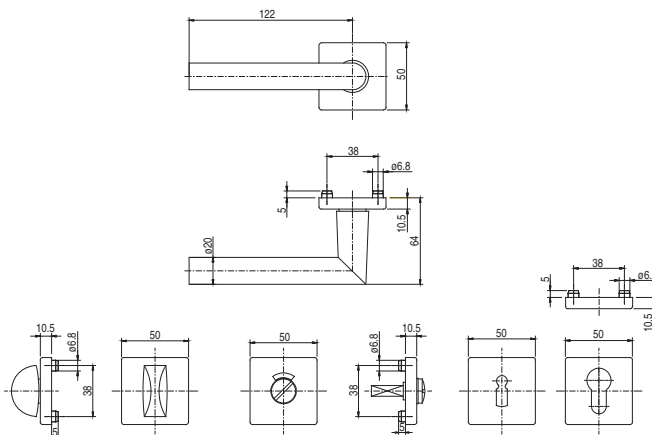
Double-sided knob

TYPE
1080



Lever for interior doors

TYPE
1010 E



INTERNAL DOOR HANDLES

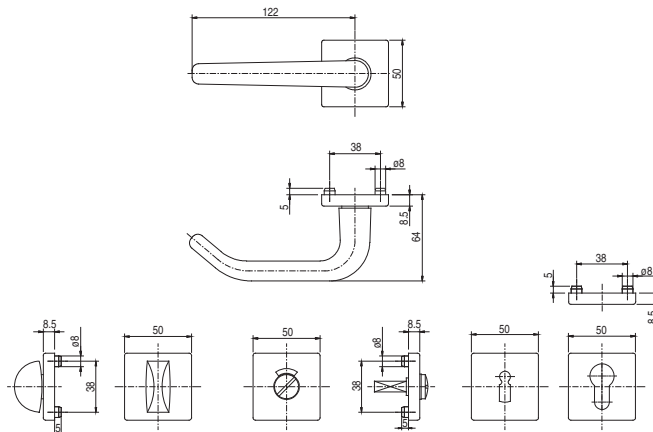
Aluminium door handle – square back plate, aluminium cover cap, additional back plates in versions: key, lock cylinder, WC, screws M5, spindle length 8 mm.

Finishing: anodized F1.

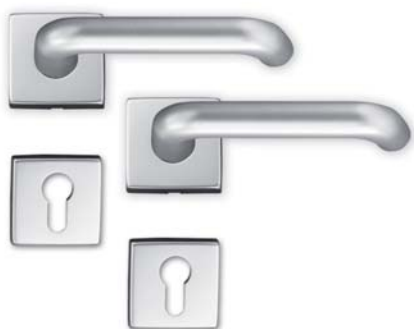
TYPE
1015 E



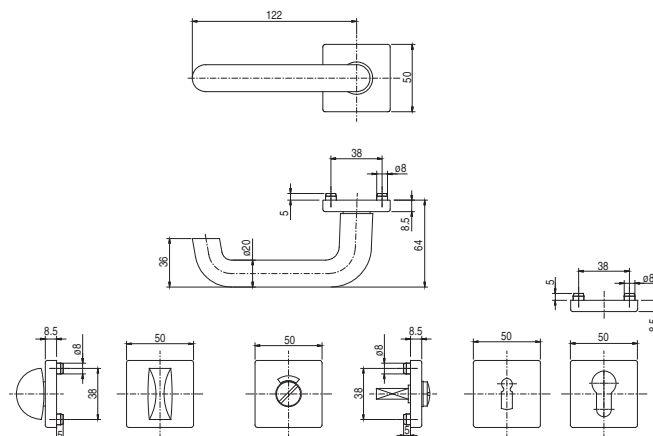
Lever for interior doors



TYPE
1040 E



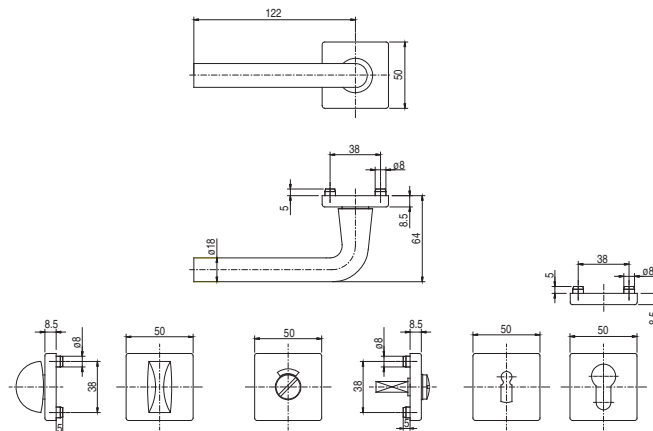
Lever for interior doors



TYPE
1070 E



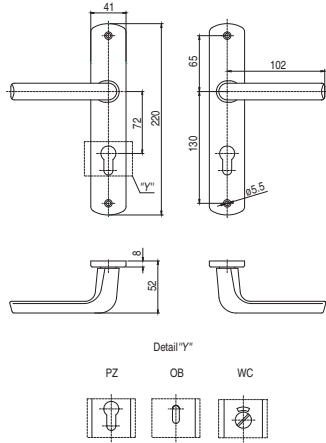
Lever for interior doors



Lever set with spindle length 8mm, aluminium pressed back plates in versions:
key, lock cylinder, WC, screws, square spindle.

Finishing: powder coated - white RAL 9016, bronze RAL 8019, anodized F1, F2, F3, F4.

Lever for interior doors

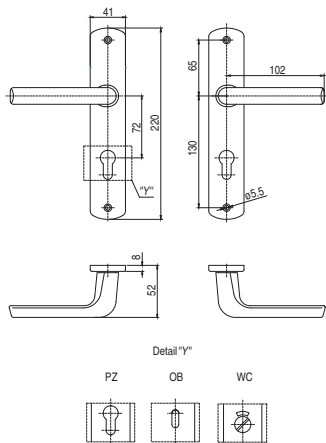


TYPE

2142/3018 L



Lever for interior doors

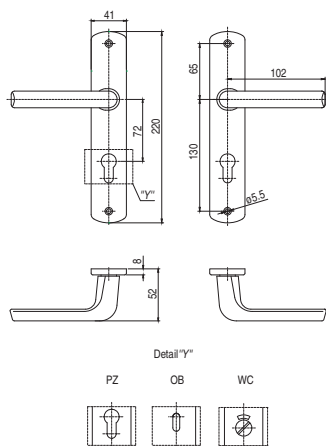


TYPE

2142/3018 L



Lever for interior doors



TYPE

2142/3018 L



INTERNAL DOOR HANDLES

Lever set with spindle length 8mm, aluminium pressed back plates in versions:
key, lock cylinder, WC, screws, square spindle.

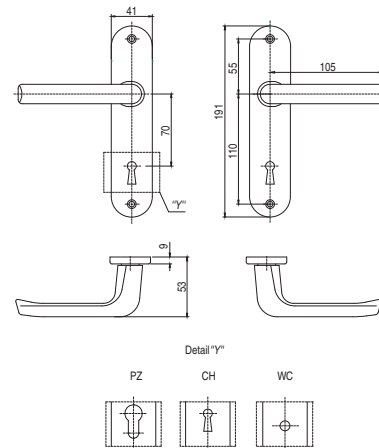
Finishing: powder coated - white RAL 9016, bronze RAL 8019, anodized F1, F2, F3, F4.

TYPE

2151/3012 L



Lever for interior doors

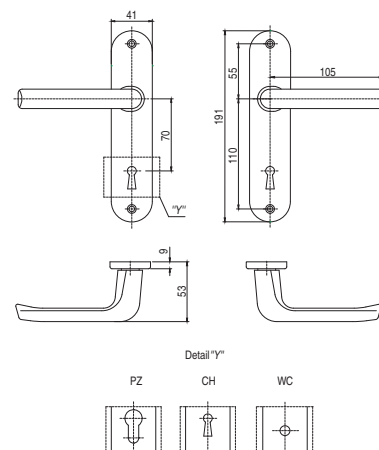


TYPE

2151/3012 L



Lever for interior doors

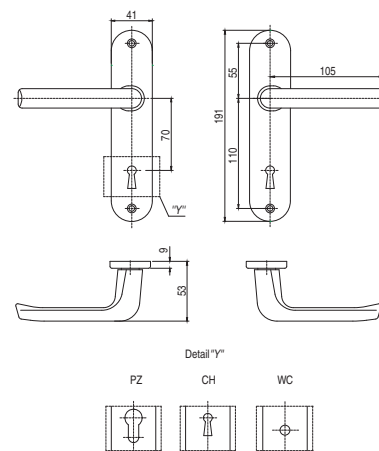


TYPE

2151/3012 L



Lever for interior doors





A L U M I N I U M
WINDOW handles

WINDOW HANDLES

PRODUCT WITH ITB- AND SKG-CERTIFICATE

Aluminium handle, rectangular or oval plastic back plate with aluminium or plastic cover cap, square spindle, with Ø 10 and 12mm lugs, spindle length: to be determined, latch: 45° and 90°.

Finishing: powder coated - white RAL 9016, bronze RAL 8019, anodized F1, F2, F3, F4, F9.

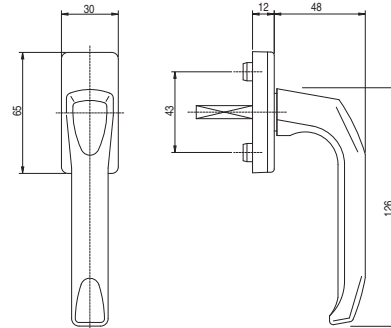
Possibility to make a customer logo: extruded, injected or tampographed.

TYPE
1003

ITB-1525/W



Window handle



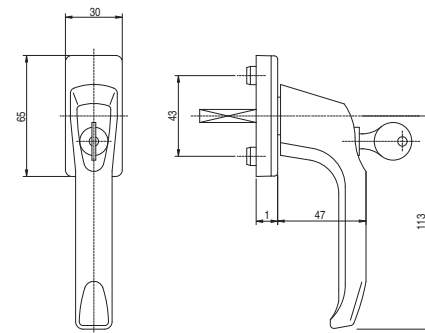
TYPE
1003 A



ITB-1525/W



Lockable window handle

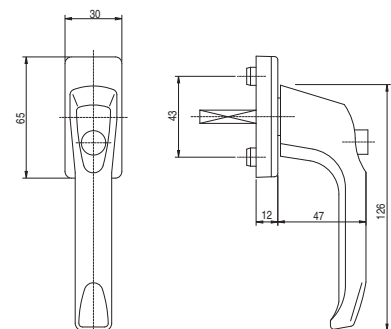


TYPE
1003 D

ITB-1525/W



Push-button window handle

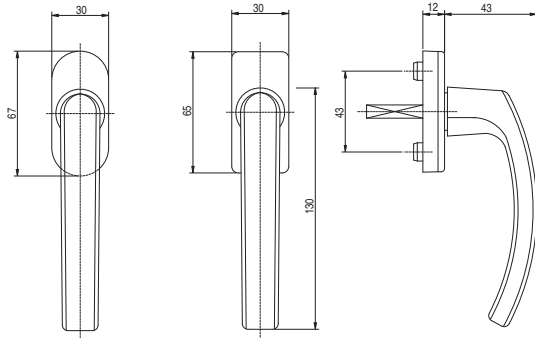


Aluminium handle, rectangular or oval plastic back plate with aluminium or plastic cover cap, square spindle, with Ø 10 and 12mm lugs, spindle length: to be determined, latch: 45° and 90°.

Finishing: powder coated - white RAL 9016, bronze RAL 8019, anodized F1, F2, F3, F4, F9.

Possibility to make a customer logo: extruded, injected or tampographed.

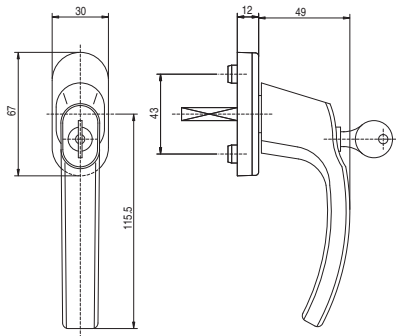
Window handle



TYPE
1005

ITB-1525/W

Lockable window handle

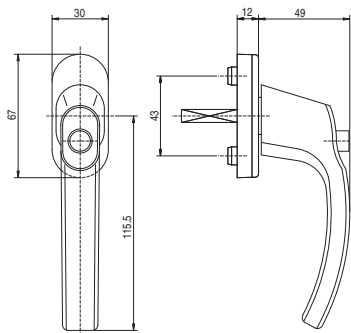


TYPE
1005 A



ITB-1525/W

Push-button window handle



TYPE
1005 D

ITB-1525/W

BURGLARY RESISTANT WINDOW HANDLE

PRODUCT WITH ITB- AND SKG-CERTIFICATE

Aluminium handle, rectangular or oval plastic back plate with aluminium or plastic cover cap, square spindle, with \varnothing 10 and 12mm lugs, spindle length: to be determined, latch: 45° and 90°.

Finishing: powder coated - white RAL 9016, bronze RAL 8019, anodized F1, F2, F3, F4, F9.

TYPE

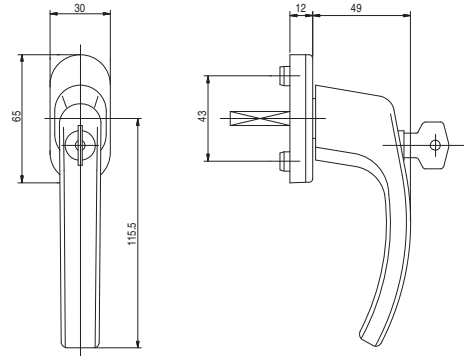
1002 A 100N



ITB-1525/W



Burglary resistant window handle

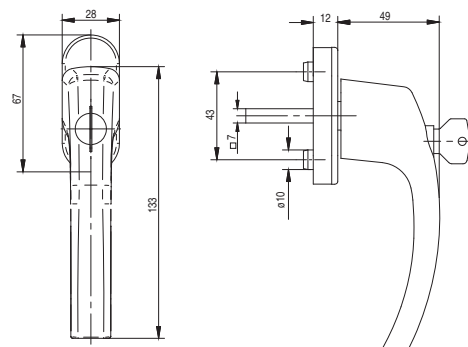


TYPE

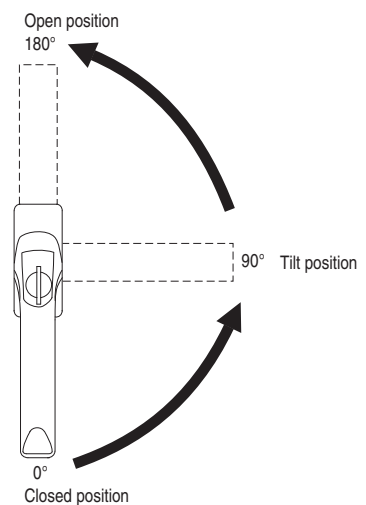
1005 A TBT



Lockable window handle with TBT function (Tilt Before Turn)



TILT BEFORE TURN

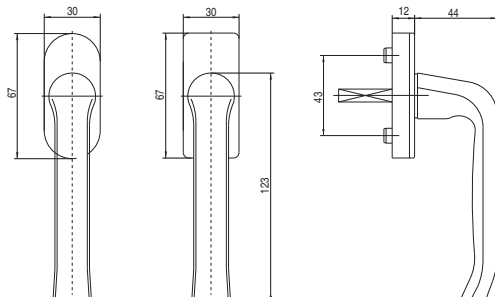


Aluminium handle, rectangular or oval plastic back plate with aluminium or plastic cover cap, square spindle, with Ø 10 and 12mm lugs, spindle length: to be determined, latch: 45° and 90°.

Finishing: powder coated - white RAL 9016, bronze RAL 8019, anodized F1, F2, F3, F4, F9.

Possibility to make a customer logo: extruded, injected or tampographed.

Window handle

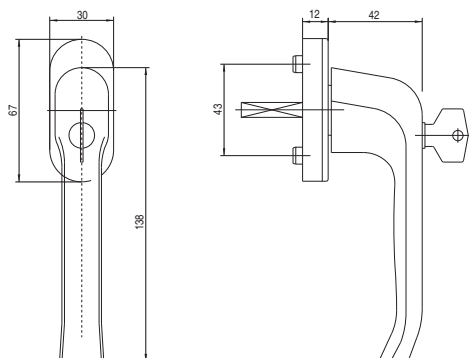


TYPE
1012

ITB-1525/W



Lockable window handle



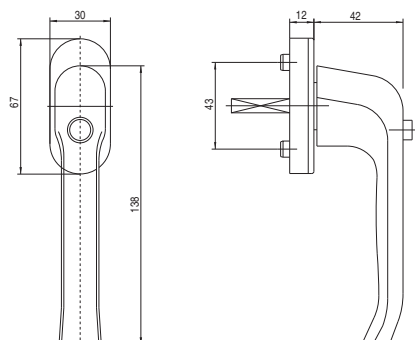
TYPE
1012 A



ITB-1525/W



Push-button window handle



TYPE
1012 D

ITB-1525/W



WINDOW HANDLES

PRODUCT WITH ITB- AND SKG-CERTIFICATE

Aluminium handle, rectangular or oval plastic back plate with aluminium or plastic cover cap, square spindle, with Ø 10 and 12mm lugs, spindle length: to be determined, latch: 45° and 90°.

Finishing: powder coated - white RAL 9016, bronze RAL 8019, anodized F1, F2, F3, F4, F9.

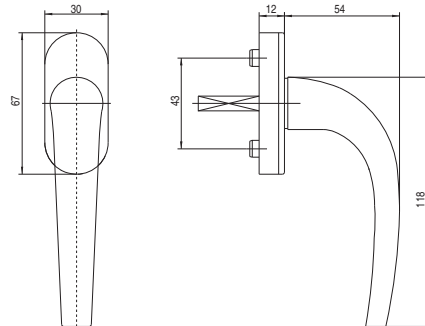
Possibility to make a customer logo: extruded, injected or tampographed.

TYPE
1031

ITB-1525/W



Window handle



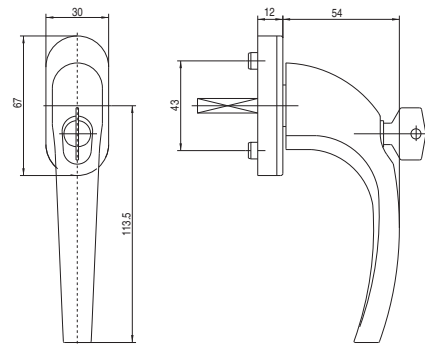
TYPE
1031 A



ITB-1525/W



Lockable window handle

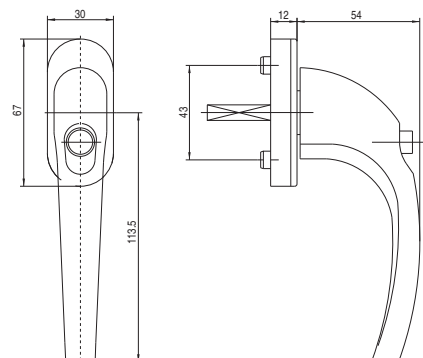


TYPE
1031 D

ITB-1525/W



Push-button window handle

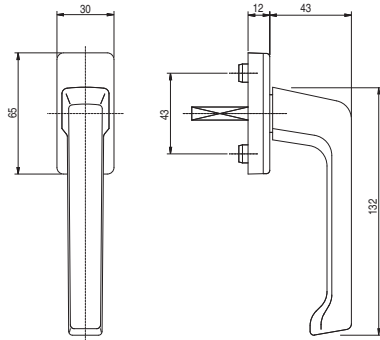


Aluminium handle, rectangular or oval plastic back plate with aluminium or plastic cover cap, square spindle, with Ø 10 and 12mm lugs, spindle length: to be determined, latch: 45° and 90°.

Finishing: powder coated - white RAL 9016, bronze RAL 8019, anodized F1, F2, F3, F4, F9.

Possibility to make a customer logo: extruded, injected or tampographed.

Window handle

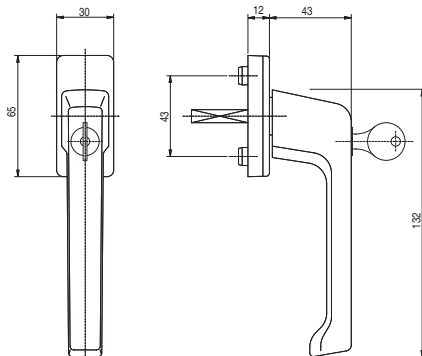


TYPE
1030

ITB-1525/W



Lockable window handle



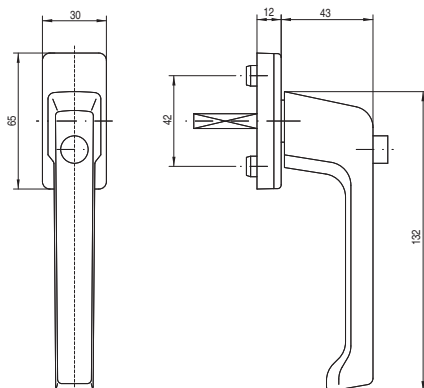
TYPE
1030 A



ITB-1525/W



Push-button window handle



TYPE
1030 D

ITB-1525/W



WINDOW HANDLES

PRODUCT WITH ITB- AND SKG-CERTIFICATE

Aluminium handle, rectangular or oval plastic back plate with aluminium or plastic cover cap, square spindle, with Ø 10 and 12mm lugs, spindle length: to be determined, latch: 45° and 90°.

Finishing: powder coated - white RAL 9016, bronze RAL 8019, anodized F1, F2, F3, F4, F9.

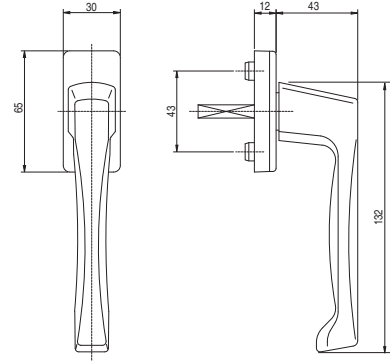
Possibility to make a customer logo: extruded, injected or tampographed.

TYPE
1050

ITB-1525/W



Window handle



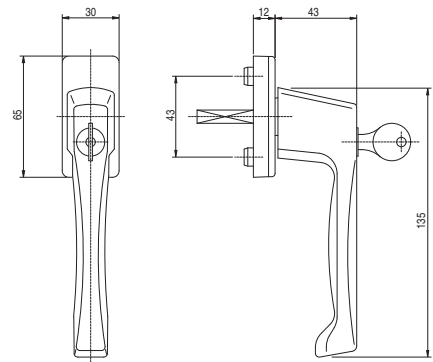
TYPE
1050 A



ITB-1525/W



Lockable window handle

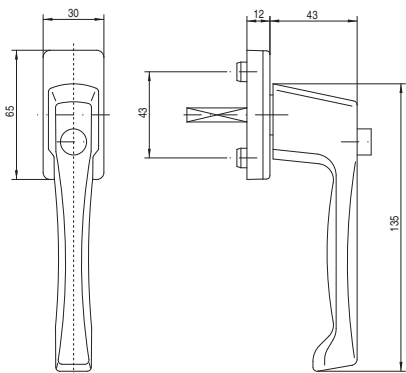


TYPE
1050 D

ITB-1525/W



Push-button window handle

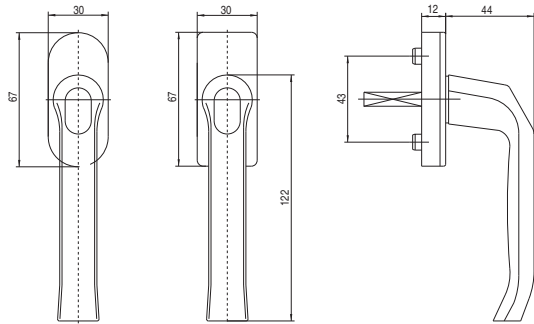


Aluminium handle, rectangular or oval plastic back plate with aluminium or plastic cover cap, square spindle, with Ø 10 and 12mm lugs, spindle length: to be determined, latch: 45° and 90°.

Finishing: powder coated - white RAL 9016, bronze RAL 8019, anodized F1, F2, F3, F4, F9.

Possibility to make a customer logo: extruded, injected or tampographed.

Window handle

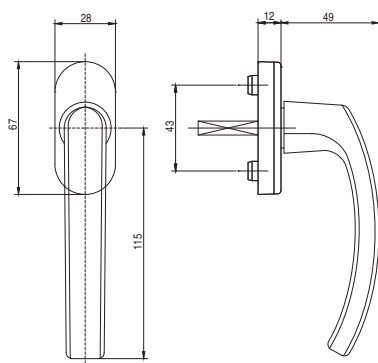


TYPE
1013

ITB-1525/W



Window handle



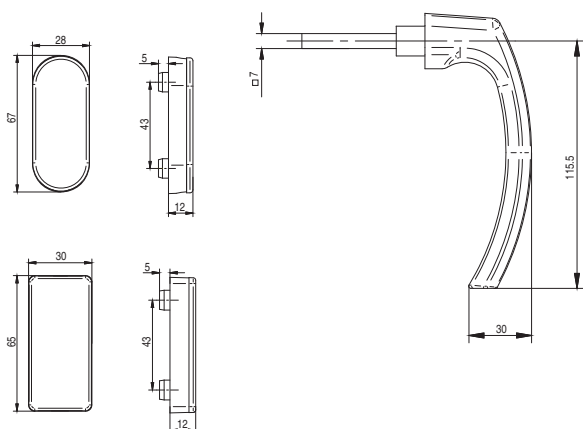
TYPE
1006

ITB-1525/W



Window handle on rectangular or oval dummy rosette

TYPE
1005 S



AURATON is the first on the market integrated electronic handle, recognizing 4 positions of the window. There is no need to assembly additional parts to the window, what would only worsen the window aesthetics. As against competition, it has attitudes that ensure security and durability of our product. As power supply, we use lithium battery from a Swiss company that ensures even 20 years of activity. Every 15 minutes the device confirms its current status, transmitting the signal wireless. Competitive solutions basing on piezoelectric power supply, transmit the signal only when the handle position changes. Another advantage of our handle is possibility to analyse the temperature, what extends application this handle also for fire protection purposes.

Below some reasons why this handle meets the highest expectations:

TYPE H1-1005



Burglary resistant function and signaling position of the window

Handle that is recognizing 4 positions of the window is the best element ensuring safety of the building. In set with alarm system it creates very effective burglary resistant system.

Handle is equipped with its own LMS (Logic Managing System) communications record, radio transmission is coded and very short. Handle sensors are secured against sabotage from outside, and every device has its own address.

TYPE Receiver AURATON RTA



TYPE H1-1031



Fire protection function

Handle is equipped with temperature sensor. Cooperating with Auraton RTF receiver it can be an element of fire protection installation.

Handle analyses the temperature nearby the window and is able to start the fire alarm, when the temperature reaches 57 °C or rises faster than 1°C in 10 seconds.

TYPE Receiver AURATON RTF



TYPE H1-1003



Function of air conditioning regulation

Handle can cooperate with the air conditioning controller as well, turning it off at the moment of opening the window. It has also function protecting the air conditioning before damage when the windows are often opening.

TYPE Receiver AURATON RTH



TYPE H1-1012



Function of heating system regulation

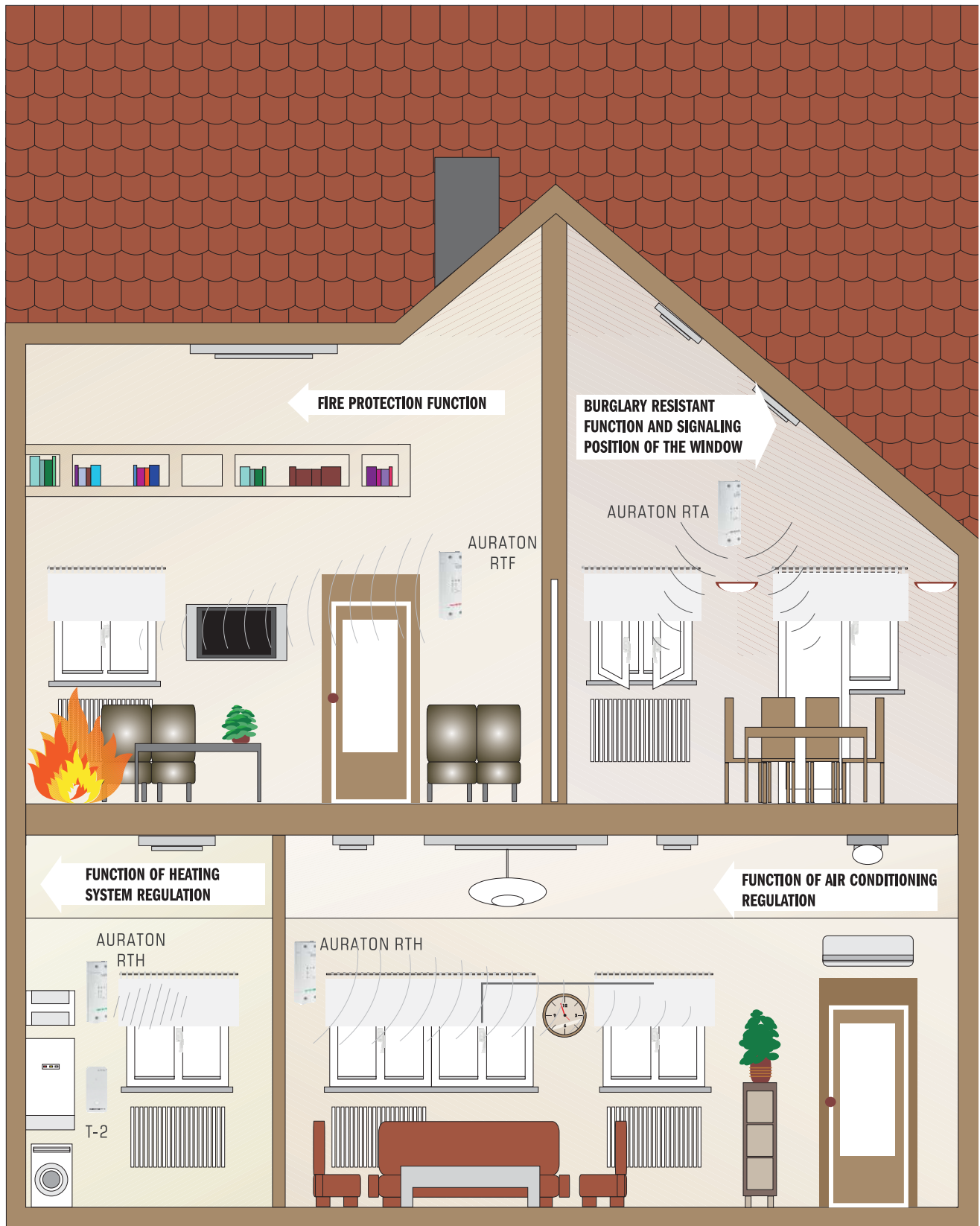
The handle is a very important element in energy saving.

The handle recognizes 4 positions of the window: open, closed, tilt and trickle ventilated.

The handle transmits information to the RTH receiver that controls the relay, e.g. switching off a heater in the event of opening the window or lowering the temperature down by 3 °C when the window is left in tilt position, which allows to save the energy. The RTH receiver is also equipped in anti-freezing function, which can be activated in case of longer trip or to prevent freezing of heating system.



Wireless temperature controller AURATON T-1



WINDOW HANDLES

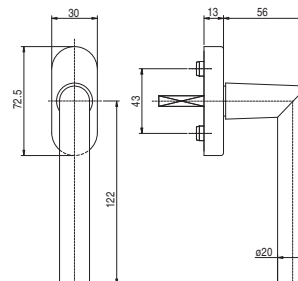
Aluminium handle, plastic disc on aluminium back plate, ball latch mechanism, square spindle, with \varnothing 10 mm lugs, spindle length: to be determined, latch: 90°, 45°.

Finishing: powder coated - white RAL 9016, bronze RAL 8019, anodized F1.

TYPE
1010



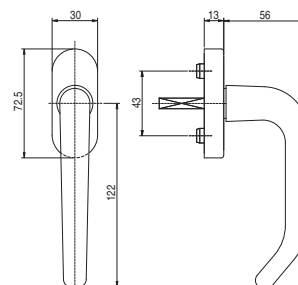
Window handle



TYPE
1015



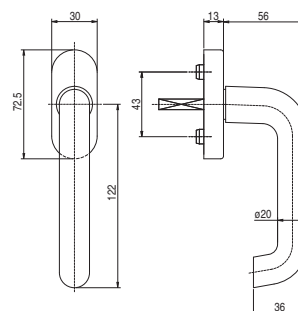
Window handle



TYPE
1040



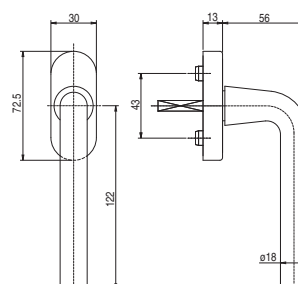
Window handle



TYPE
1070



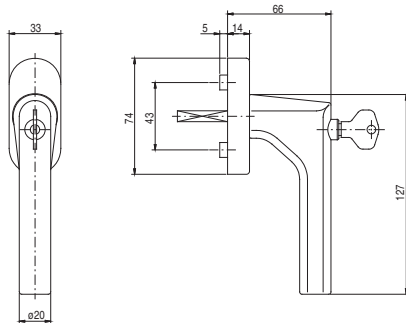
Window handle



Aluminium handle, plastic disc on aluminium back plate, ball latch mechanism, square spindle, with \varnothing 10 mm lugs, spindle length: to be determined, latch: 90°, 45°.

Finishing: powder coated - white RAL 9016, bronze RAL 8019, anodized F1.

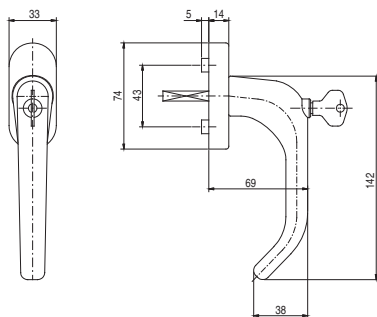
Lockable window handle



TYPE
1010 A



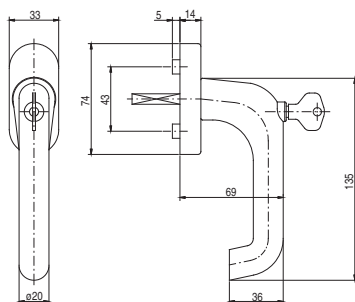
Lockable window handle



TYPE
1015 A



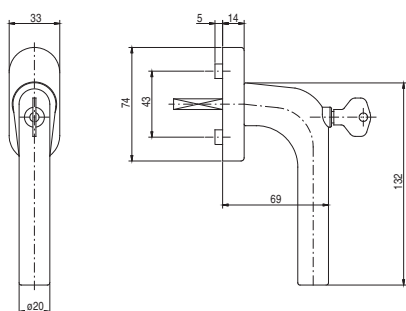
Lockable window handle



TYPE
1040 A



Lockable window handle



TYPE
1070 A



Aluminium lever set on back plates, screws M5 x 95, square spindle 7mm x 120, set of cylinder back plates.

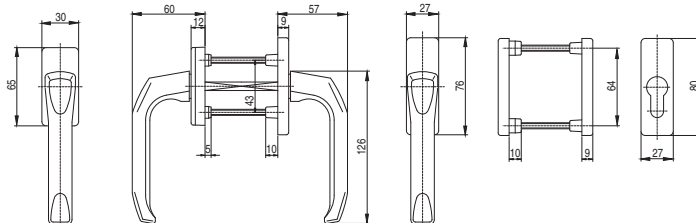
Finishing: powder coated - white RAL 9016, bronze RAL 8019, anodized F1, F2, F3, F4.

TYPE

1003 KB E



Balcony lever set

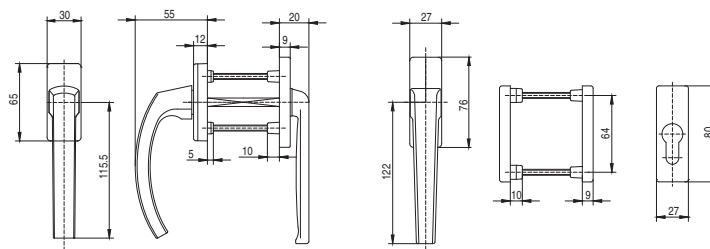


TYPE

1005 KBR E



Balcony lever set with low handle for roller shutters

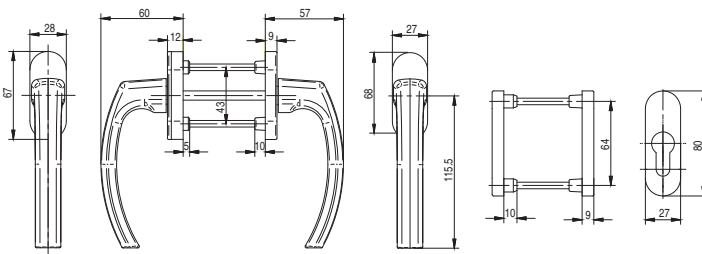


TYPE

1005 KB



Balcony lever set with oval back plates

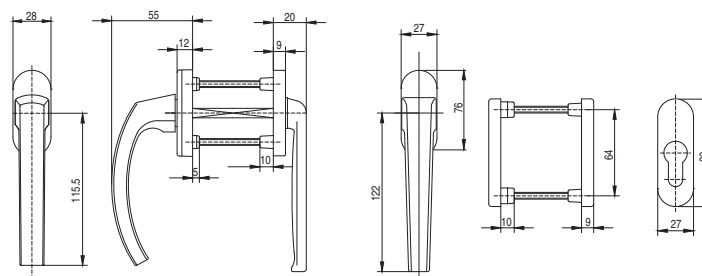


TYPE

1005 KBR



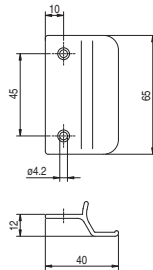
Balcony lever set with low handle for roller shutters and oval back plates



Balcony pad handle in aluminium with or without offset.

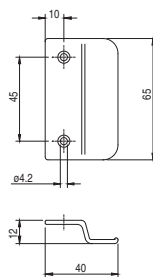
Finishing: powder coated - white RAL 9016, bronze RAL 8019, anodized F1, F2, F3, F4, F9.

Balcony pad handle with offset



TYPE
UB S

Balcony pad handle without offset



TYPE
UB

SPECIAL HANDLES

PRODUCT WITH ITB-CERTIFICATE

Aluminium handle, rectangular or oval plastic back plate with securing plate, zamak back plate, aluminium cover cap, square spindle, with Ø 10 and 12mm lugs, spindle length: to be determined, latch: 45° and 90°.

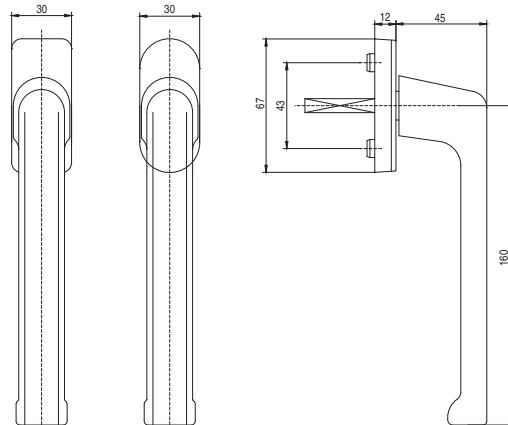
Finishing: powder coated - white RAL 9016, bronze RAL 8019, anodized F1, F2, F3, F4, F9.

TYPE

501



Handle for sliding door

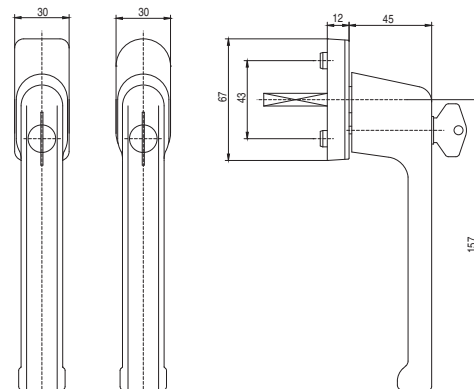


TYPE

501 A



Lockable handle for sliding door



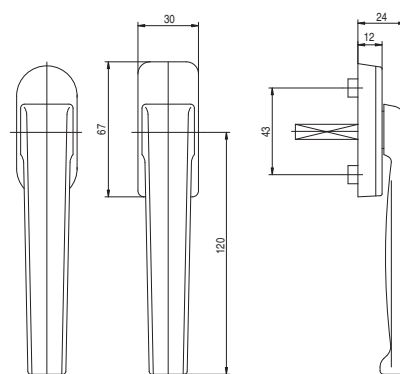
TYPE

1030 R

ITB-1525/W



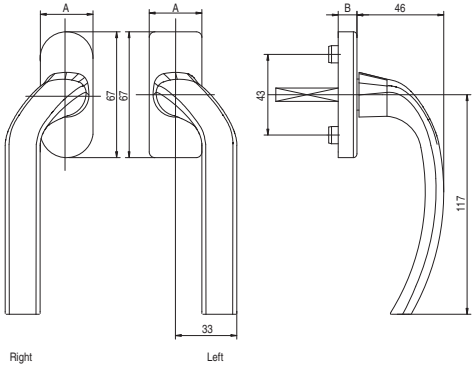
Window low handle for roller shutters



Aluminium handle, rectangular or oval plastic back plate with aluminium or plastic cover cap, square spindle 7 mm and 8mm, with Ø 10 and 12mm lugs, spindle length: to be determined, latch: 45° and 90°.

Finishing: powder coated - white RAL 9016, bronze RAL 8019, anodized F1.

Handles for windows opening outside

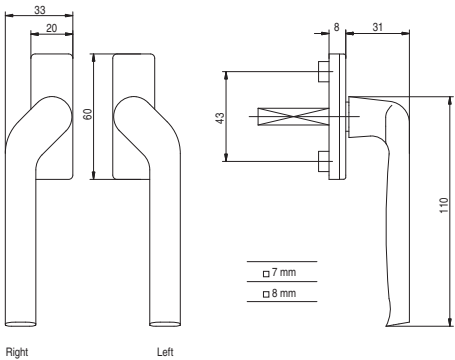


A	B
24	13
28	12

TYPE
1005 V



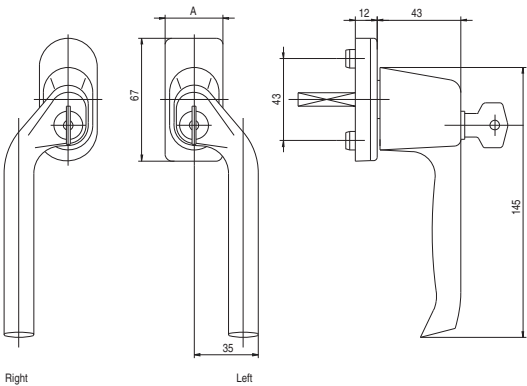
Handles for windows opening outside
Diameter of lugs only 10 mm



TYPE
1012 VM



Handles for windows opening outside



A
28
30

TYPE
1012 VA





B R A S S
handles

LEVER

PRODUCT WITH ITB-CERTIFICATE

Brass lever set, with pad handle or knob, zamak back plate with hardened steel cylinder and spring mechanism, cover cap secured with ball latch, screws M6, spindle length 8 mm.

Finishing: polished brass.

TYPE

35A/1200

ITB-1350/W



TYPE

35A/1200 G

ITB-1350/W



TYPE

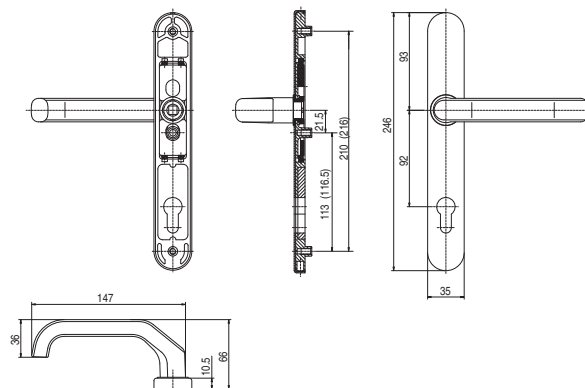
35A/1200 P

ITB-1350/W



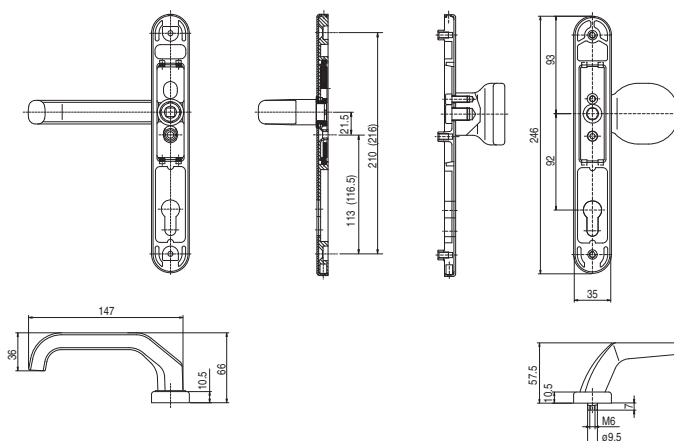
Lever

3 7 - 0 1 3 2 B



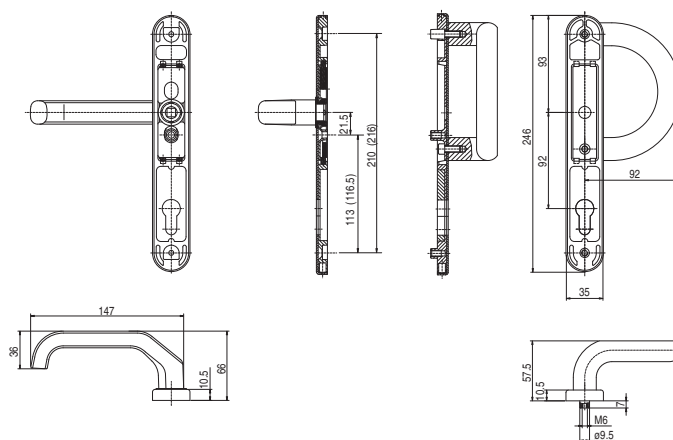
Lever set with knob

3 7 - 0 1 3 2 B



Lever set with pad handle

3 7 - 0 1 3 2 B

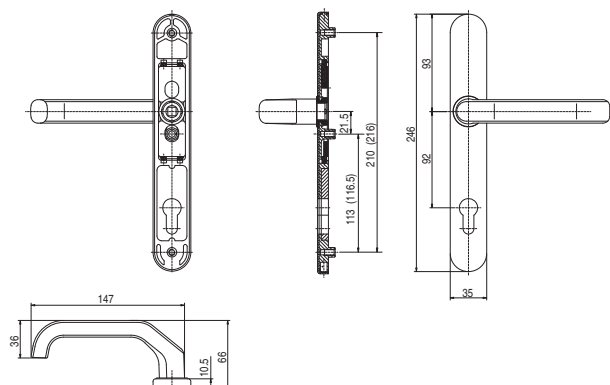


Brass lever set, zamak back plate with hardened steel cylinder and spring mechanism, cover cap secured with ball latch, screws M6, spindle length 8 mm.

Finishing: bronzed brass.

3 7 - 0 1 3 2 B

Lever



TYPE

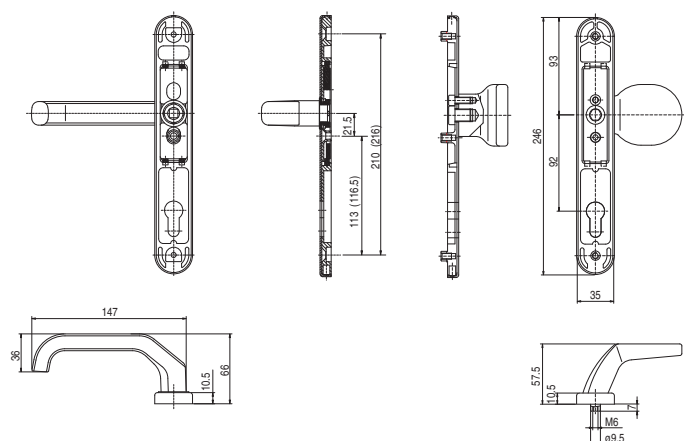
35A/1200

ITB-1350/W



3 7 - 0 1 3 2 B

Lever set with knob



TYPE

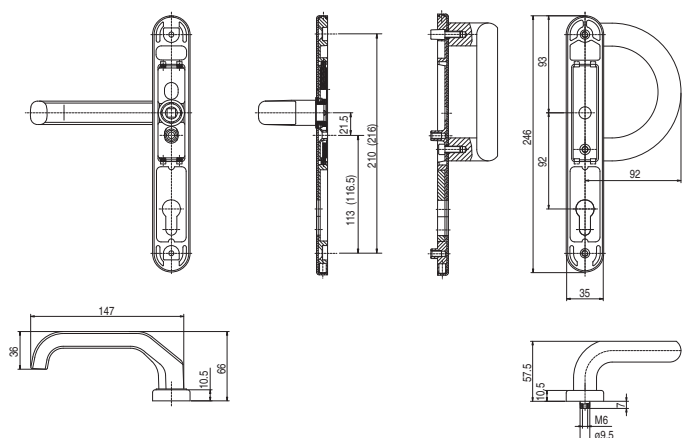
35A/1200 G

ITB-1350/W



3 7 - 0 1 3 2 B

Lever set with pad handle



TYPE

35A/1200 P

ITB-1350/W



CYLINDER BACK PLATE

Brass cylinder back plate with zamak plate protecting against dismantling and brass cover cap.

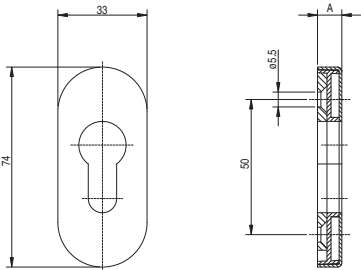
Finishing: polished brass, bronzed brass.

TYPE
33 PZ



A
6
9

Oval cylinder back plate

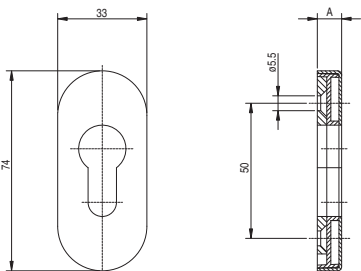


TYPE
33 PZ



A
6
9

Oval cylinder back plate





S T A I N L E S S
S T E E L
door handles

LEVER

PRODUCT WITH ITB-CERTIFICATE

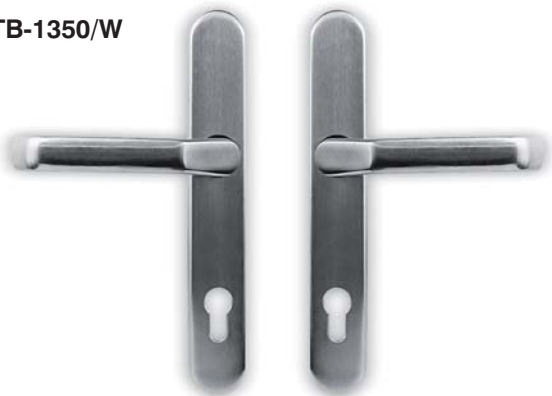
Stainless steel lever set, zamak back plate with hardened steel cylinder and spring mechanism, cover cap secured with ball latch, screws M6 and spindle length 8 mm.

Finishing: stainless steel.

TYPE

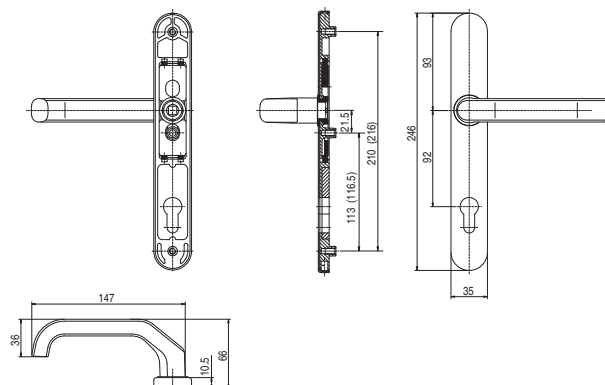
35A/1200

ITB-1350/W



Lever

3 7 - 0 1 3 2 B



TYPE

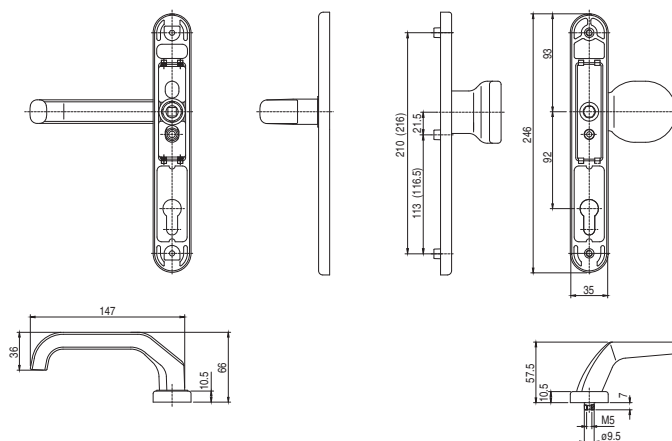
35A/1200 G

ITB-1350/W



Lever set with knob type G

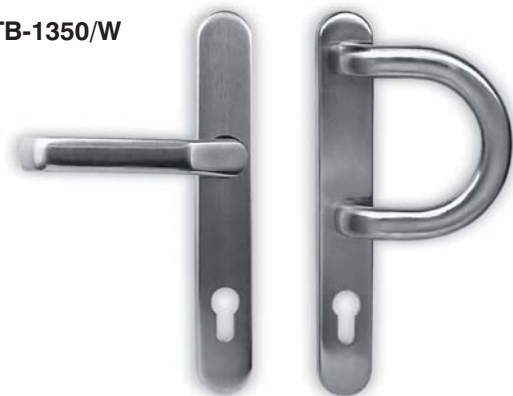
3 7 - 0 1 3 2 B



TYPE

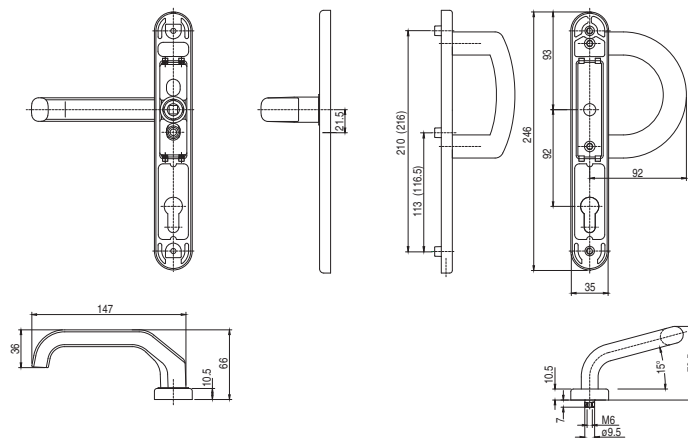
35A/1200 P

ITB-1350/W



Lever set with pad handle type P

3 7 - 0 1 3 2 B

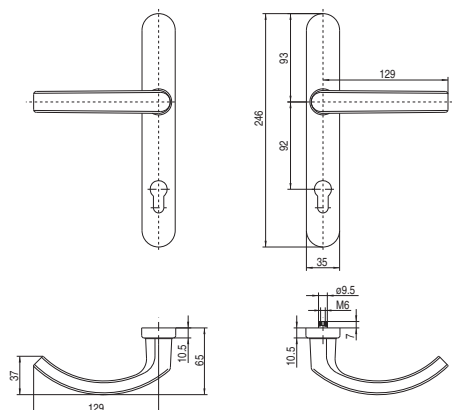


Stainless steel lever set, zamak back plate with hardened steel cylinder and spring mechanism, cover cap secured with ball latch, screws M6 and spindle length 8 mm.

Finishing: stainless steel.

3 7 - 0 1 3 2 B

Lever



TYPE

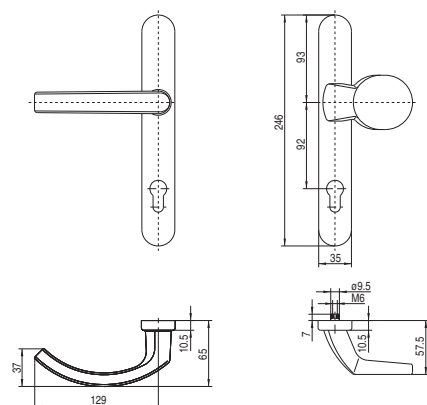
35A/2000

ITB-1350/W



3 7 - 0 1 3 2 B

Lever set with knob



TYPE

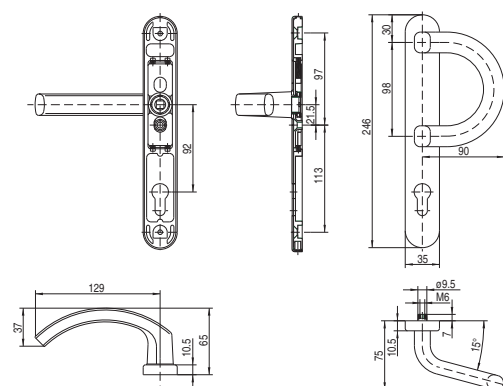
35A/2000 G

ITB-1350/W



3 7 - 0 1 3 2 B

Lever set with pad handle type P



TYPE

35A/2000 P

ITB-1350/W



LEVER

PRODUCT WITH ITB-CERTIFICATE

Stainless steel lever set, zamak back plate with hardened steel cylinder and spring mechanism, cover cap secured with ball latch, screws M6 and spindle length 8 mm.

Finishing: stainless steel.

TYPE

35A/2000 KZ

ITB-1350/W



TYPE

35A/2000 G KZ

ITB-1350/W



TYPE

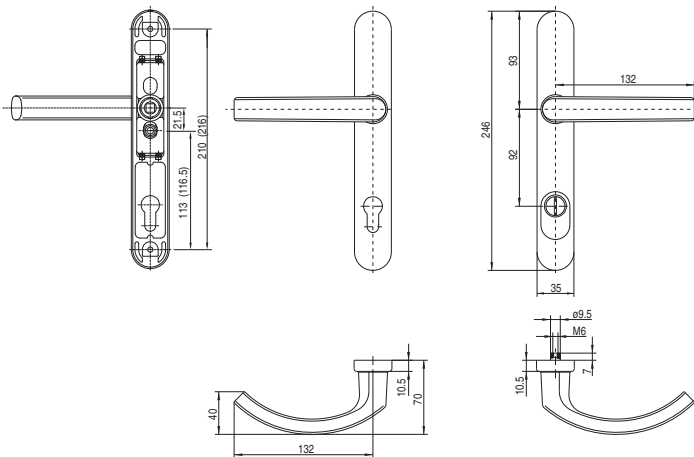
35A/2000 P KZ

ITB-1350/W



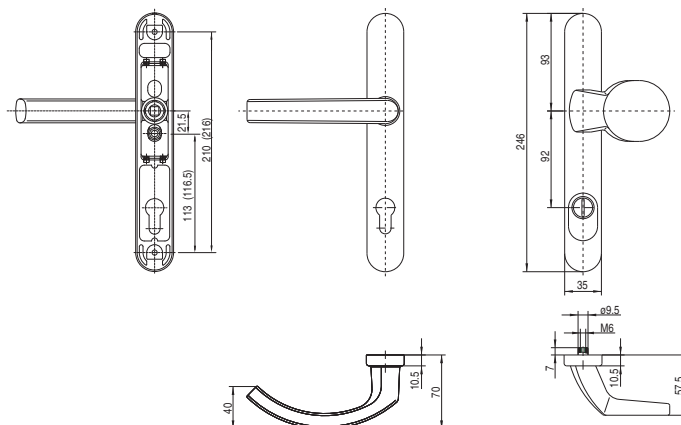
Lever

3 7 - 0 1 3 2 B



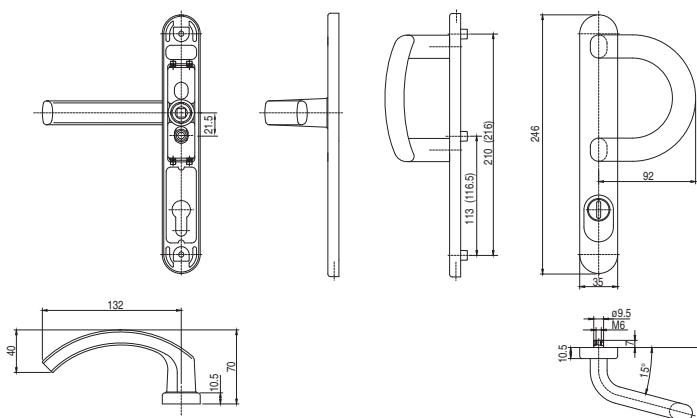
Lever set with knob

3 7 - 0 1 3 2 B



Lever set with pad handle type P

3 7 - 0 1 3 2 B

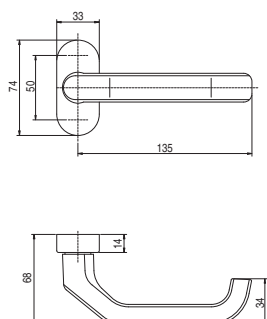


Stainless steel lever on zamak back plate, spring mechanism and cover cap. The cylinder back plate with zamak plate protecting against dismantling and cover cap.

Finishing: stainless steel.

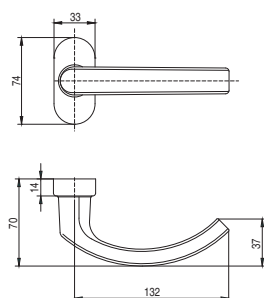
Sectional lever on oval back plate

TYPE
R32/1200



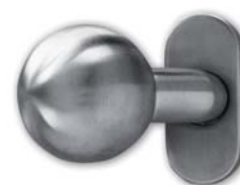
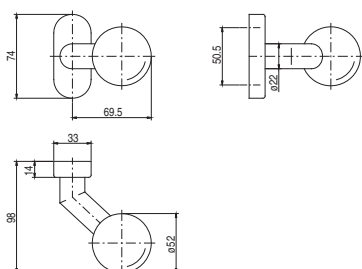
Sectional lever on oval back plate

TYPE
R32/2000



Knob on oval back plate

TYPE
R32/G4



CYLINDER BACK PLATE

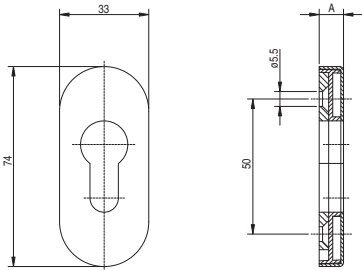
Cylinder back plate with zamak plate protecting against dismantling and cover cap.
Finishing: stainless steel.

TYPE
33 PZ



A
6
9

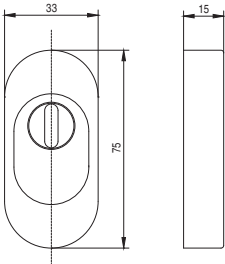
Oval cylinder back platel



TYPE
33 KZ-1



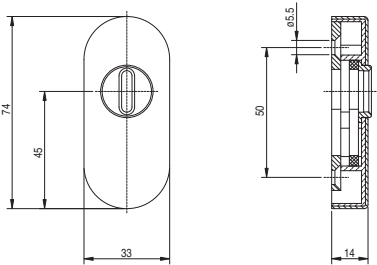
Cylinder back plate with burglary protection



TYPE
33 KZ-2



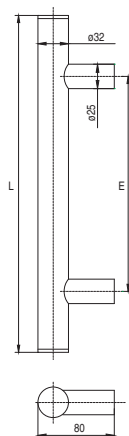
Cylinder back plate with burglary protection



Tube handle with fixing elements.

Finishing: stainless steel.

Tube handle straight I

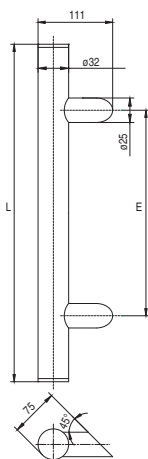


L	E
400 mm	300 mm
600 mm	400 mm
800 mm	600 mm
1000 mm	800 mm
1200 mm	1000 mm
1400 mm	1200 mm
2000 mm	1800 mm

TYPE
PR I



Tube handle straight II



L	E
400 mm	300 mm
600 mm	400 mm
800 mm	600 mm
1000 mm	800 mm
1200 mm	1000 mm
1400 mm	1200 mm
2000 mm	1800 mm

TYPE
PR II



Fixings



PVC, timber, aluminium
double-sided



PVC, timber, aluminium
one-sided



glass
one-sided

WINDOW HANDLES

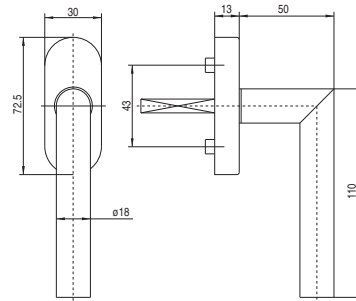
Steel handle, plastic disc on steel back plate, ball latch mechanism, spindle length 7 mm, with \varnothing 10 mm lugs, spindle length to be determined, latch: 45° and 90°.

Finishing: stainless steel.

TYPE 1010



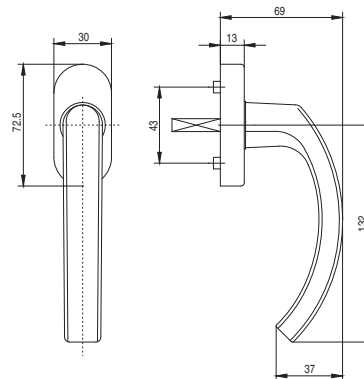
Window handle



TYPE 1020



Window handle





FKS OKUCIA OKIENNE I DRZWIOWE Sp. z o.o.

Bronikowo, ul. Morownicka 1c, 64-030 Śmigiel, PL

phone +48 65 51 88 024, phone/fax +48 65 51 88 030,

www.fks.home.pl, mail: fks@home.pl

